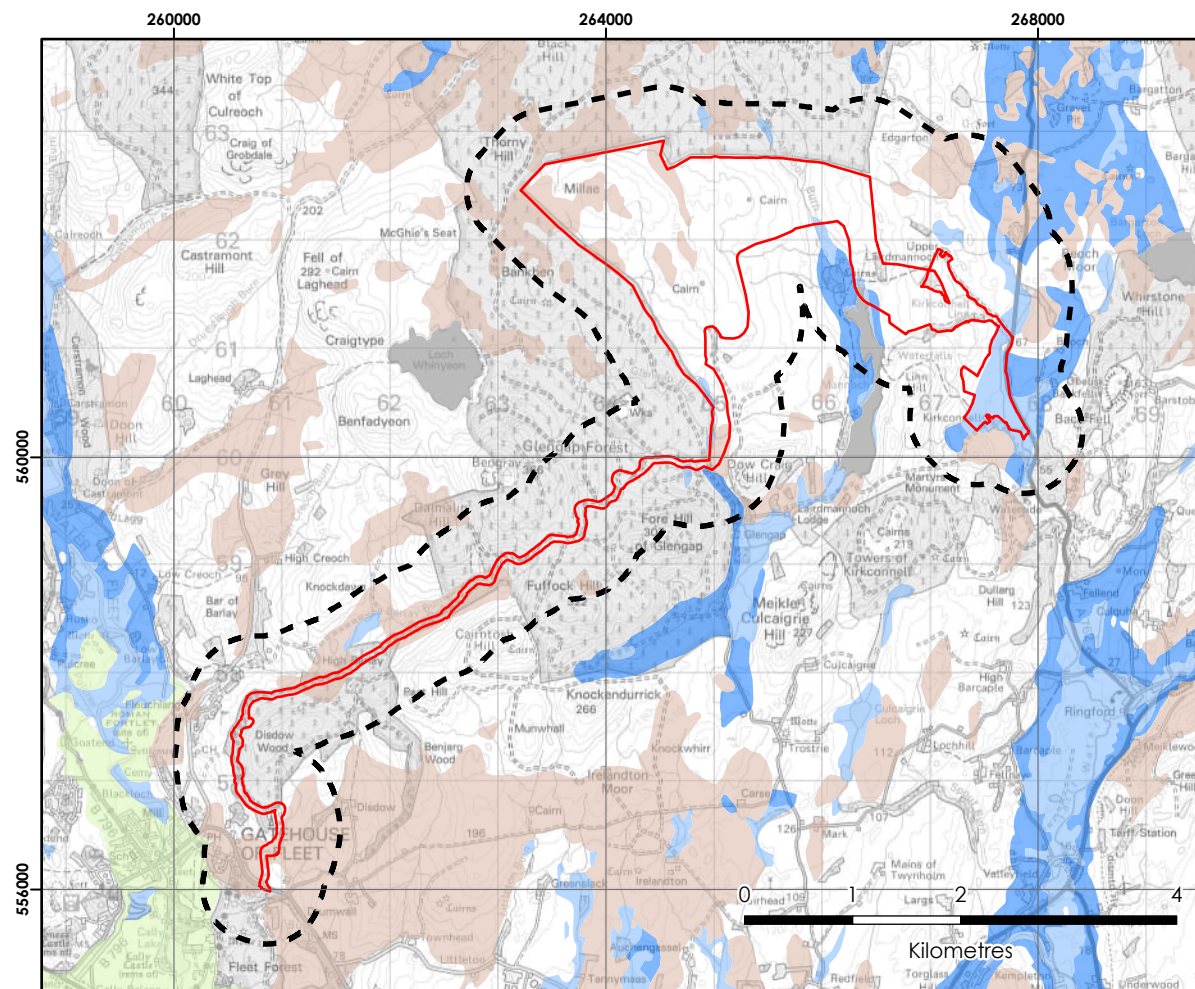


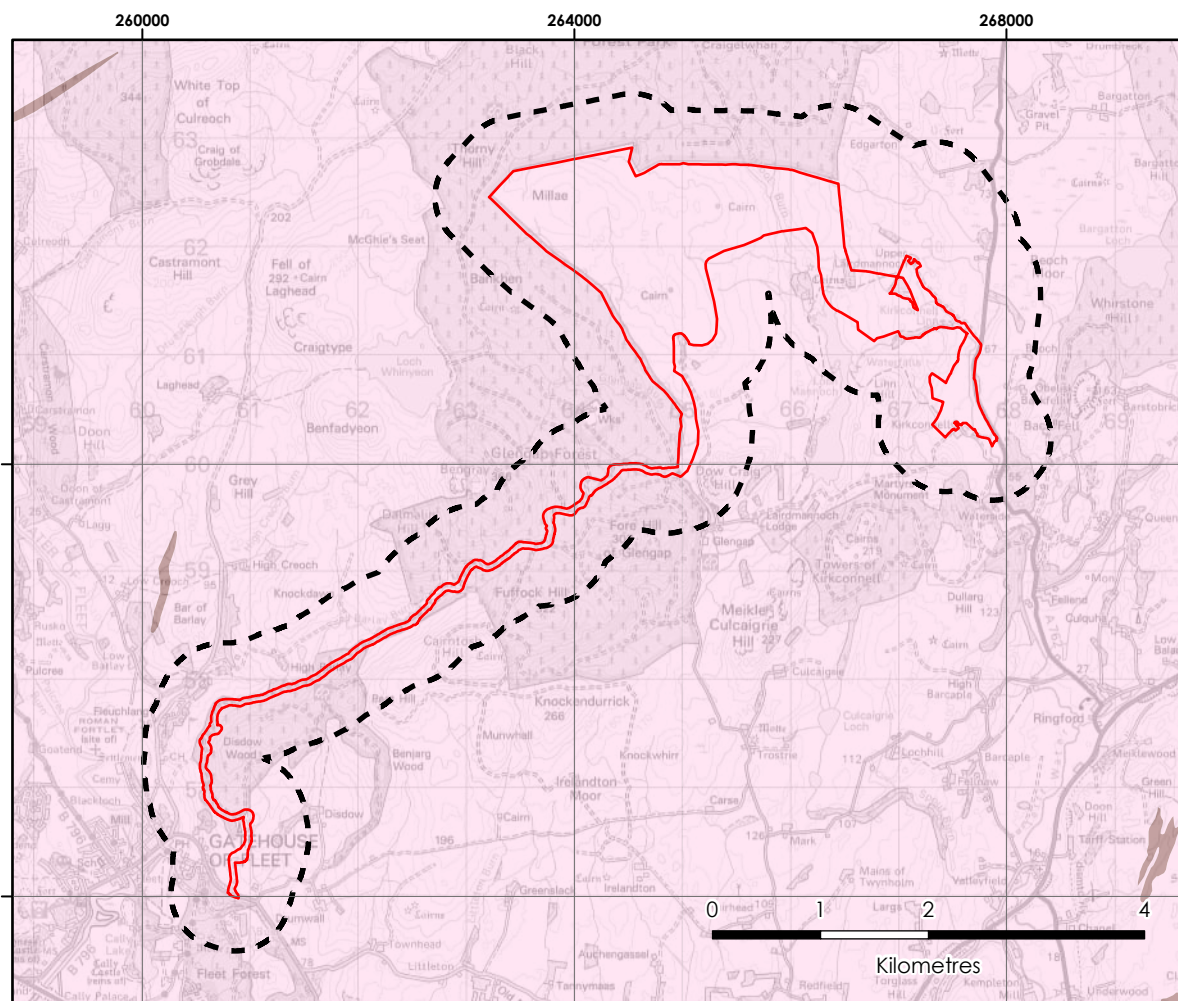
Map Extract

Scale @ A3: 1:150,000



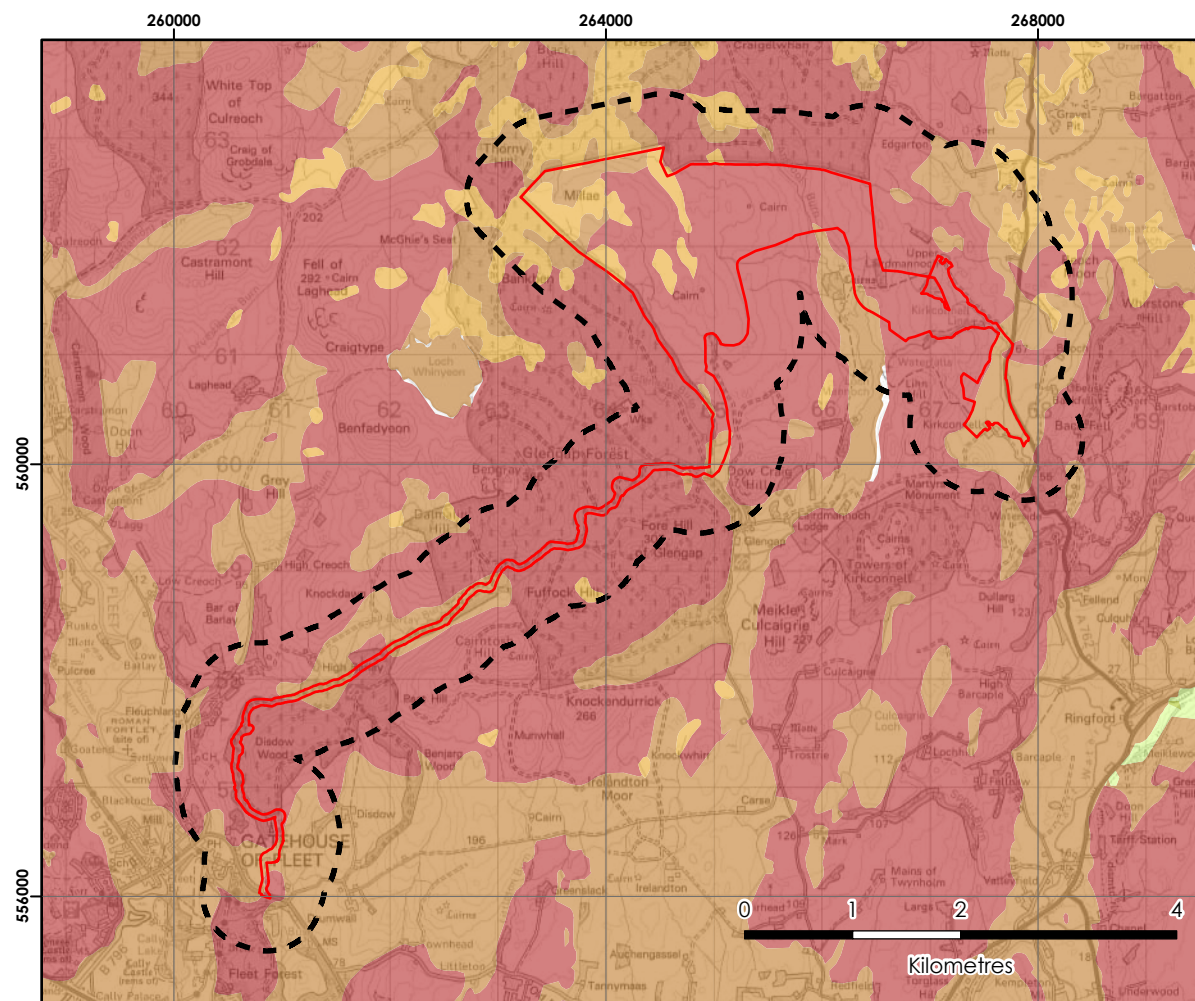
Superficial Aquifer

Scale @ A3: 1:70,000



Bedrock Aquifer

Scale @ A3: 1:70,000



Groundwater Vulnerability

Scale @ A3: 1:70,000

Lairdmannoch Energy Park

wind2

Figure 8.7
Aquifer Classification and
Groundwater Vulnerability

Key

- Site Boundary
- Study Area (Site Boundary 500 m Buffer)

Superficial Aquifer

- Intergranular; High Productivity
- Intergranular; Moderate to High Productivity
- Intergranular; Low to Moderate Productivity
- Not a significant aquifer
- Unknown Geology

Bedrock Aquifer

- Fracture; Low Productivity
- Fracture; Very Low Productivity

Groundwater Vulnerability in the Uppermost Aquifer Vulnerability Class

- 5 - Vulnerable to most pollutants, with rapid impact in many scenarios.
- 4a - Vulnerable to those pollutants not readily adsorbed or transformed. Less likely to have clay present in superficial deposits (therefore generally higher vulnerability than 4b).
- 4b - Vulnerable to those pollutants not readily adsorbed or transformed. More likely to have clay present in superficial deposits (therefore generally lower vulnerability than 4a).
- 3 - Vulnerable to some pollutants; many others significantly attenuated.
- 2 - Vulnerable to some pollutants, but only when they are continuously discharged/leached.

SLR

atmos
CONSULTING



Scale @ A3:
SCALE AS SHOWN



© Crown copyright 2025. All rights reserved.
Ordnance survey licence number AC0000808122.
Groundwater Vulnerability data obtained via BGS.
British Geological Survey ©NERC. All Rights Reserved [2025]