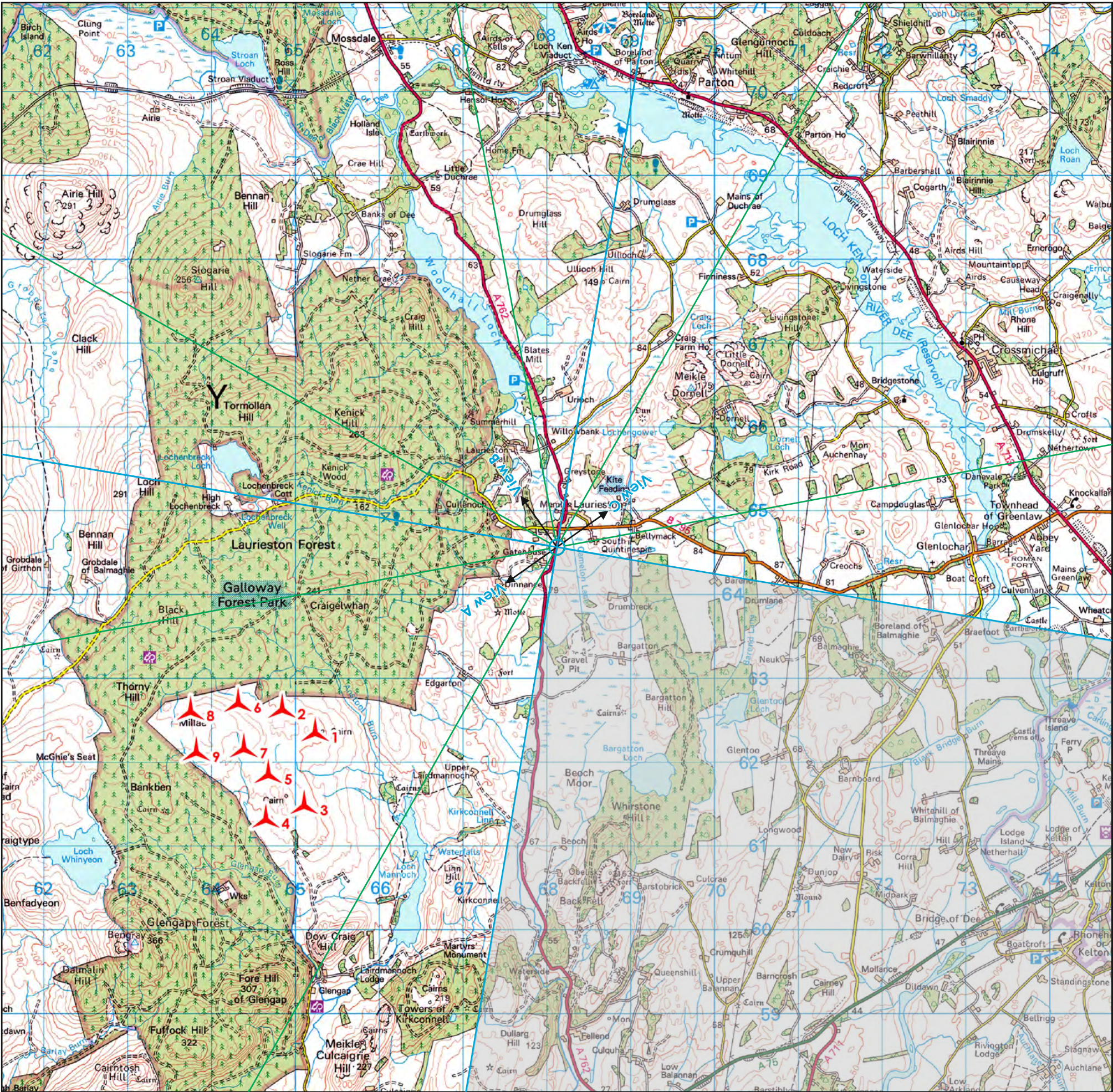


Reproduced by permission of Ordnance Survey on behalf of HMSO. © Crown Copyright and database right 2025 All rights reserved. Ordnance Survey Licence No ACO000808122 (Atmos).



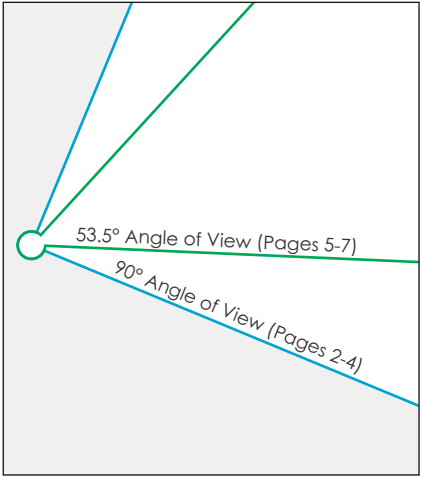
Lairdmannoch Energy Park

wind2

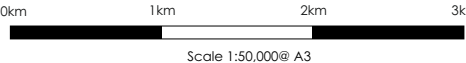
atmos
CONSULTING

Viewpoint 8 - Laurieston

Viewpoint Data	
Grid Reference	268134, 564574
Elevation	68m AOD
Wireframe/Photograph	
Height above ground	2m
Camera and Lens	Canon 5D Mark II with fixed 50mm lens
Date	19/07/2023
Time	13:19
Proposed Turbine Information	
Hub Height	98.5m
Blade Tip Height	180m
Predicted Visibility, Distance and Direction	
Number of Turbine Tips Visible*	9
Number of Turbine Hubs Visible	9
Distance to Nearest Turbine	3.65km
Direction to Site Centre	235°
Proposed Turbine	
Consented Turbine	
Operational Turbine	



Tripod location



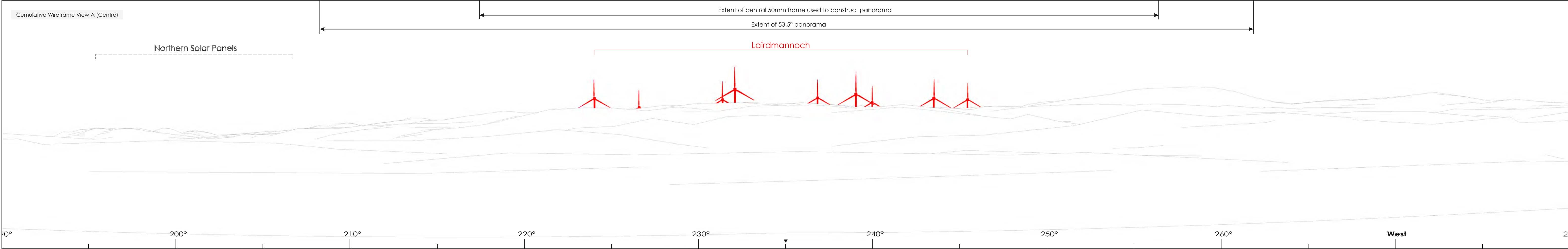
Scale 1:50,000@ A3

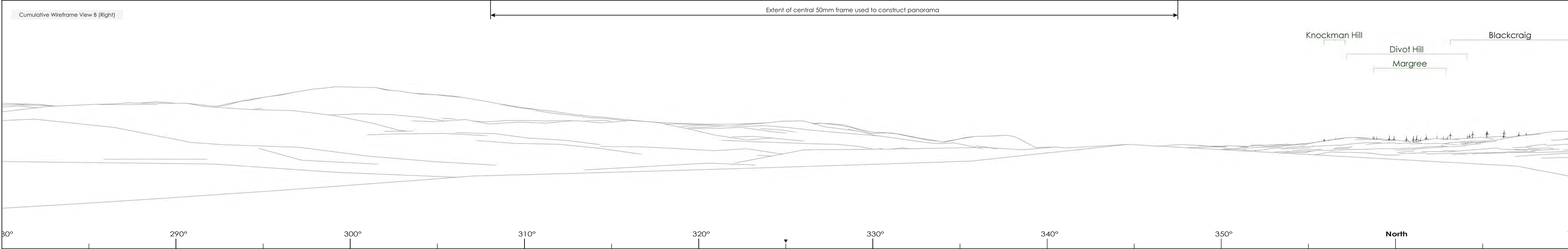


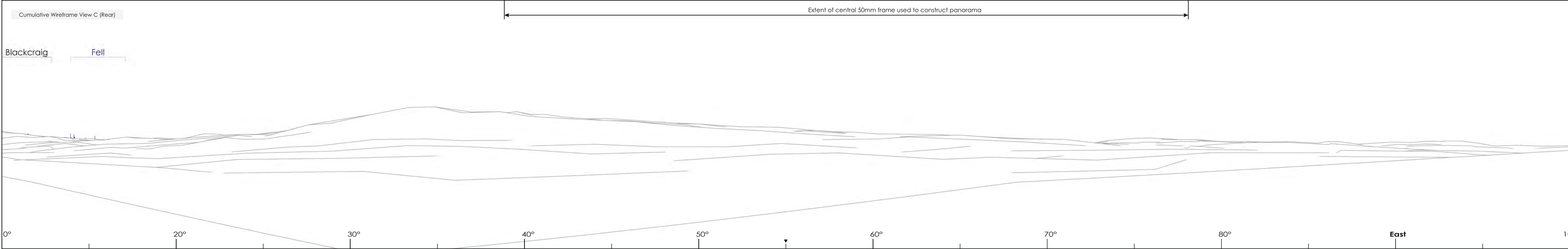
Wireframes are generated using Ordnance Survey's Terrain 5 Dataset which does not take into account the screening effects of buildings or vegetation.
*Refers to the number of turbines for which blade tips can be seen rather than the number of individual tips seen from the viewpoint.

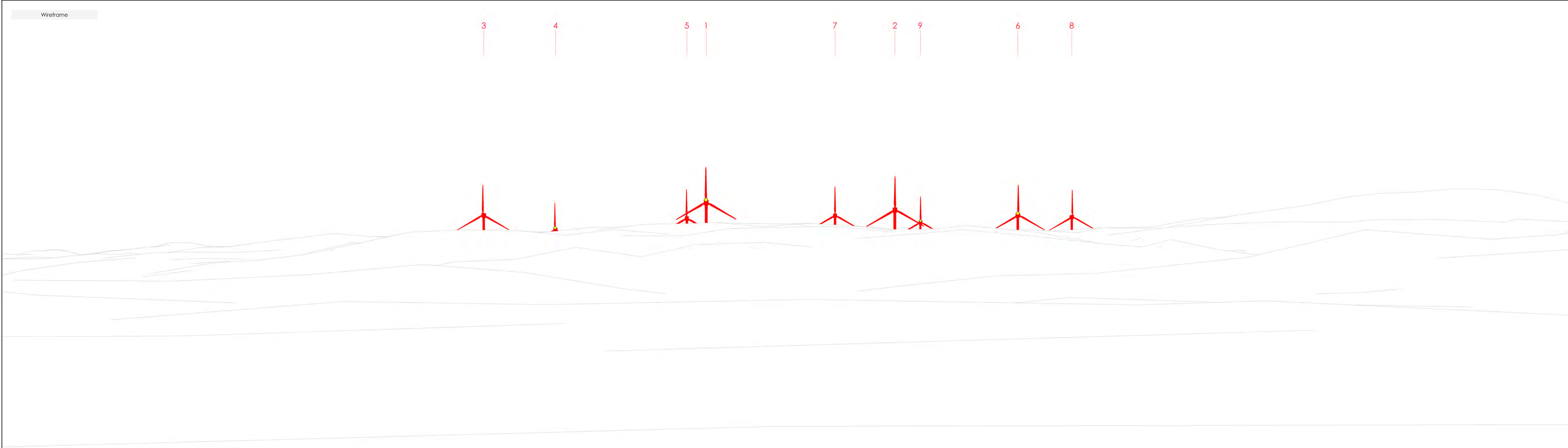


The image provides landscape and visual context only.









● Presence of 2000 candela lighting (hub)



