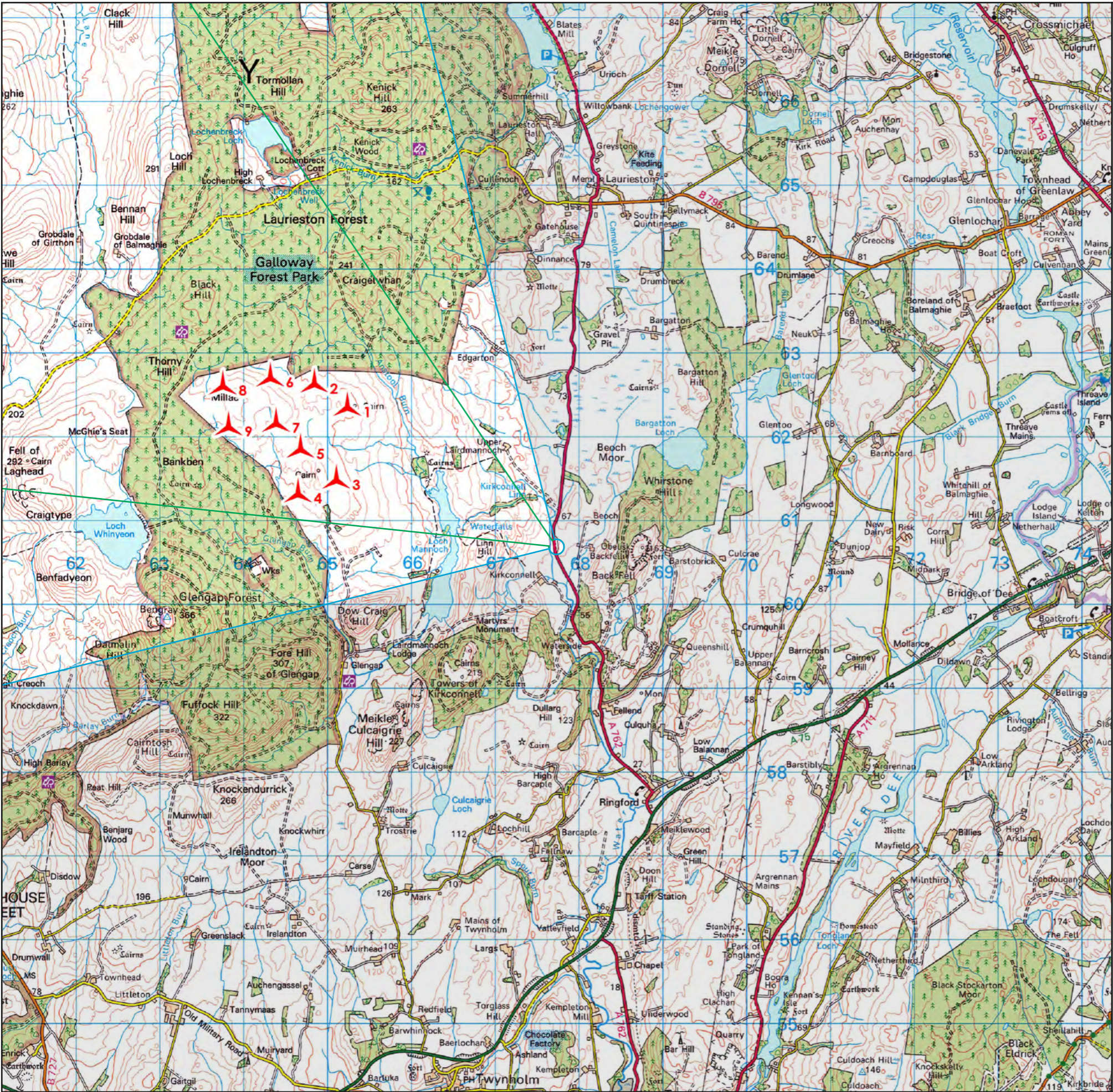


Reproduced by permission of Ordnance Survey on behalf of HMSO. © Crown Copyright and database right 2025 All rights reserved. Ordnance Survey Licence No ACO000808122 (Atmos).



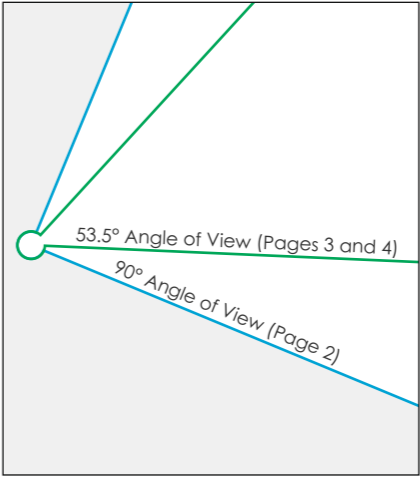
Lairdmannoch Energy Park

wind2

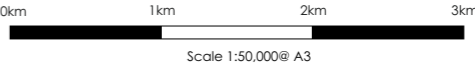
atmos  
CONSULTING

Viewpoint 2 - A762, Kirkconnel

<b>Viewpoint Data</b>	
Grid Reference	267742, 560716
Elevation	59m AOD
<b>Wireframe/Photograph</b>	
Height above ground	2m
Camera and Lens	Canon 5D Mark II with fixed 50mm lens
Date	18/03/2024
Time	10:17
<b>Proposed Turbine Information</b>	
Hub Height	98.5m
Blade Tip Height	180m
<b>Predicted Visibility, Distance and Direction</b>	
Number of Turbine Tips Visible*	3
Number of Turbine Hubs Visible	0
Distance to Nearest Turbine	2.74km
Direction to Site Centre	293°
Proposed Turbine	
Consented Turbine	
Operational Turbine	



Tripod location



Scale 1:50,000@ A3



Wireframes are generated using Ordnance Survey's Terrain 5 Dataset which does not take into account the screening effects of buildings or vegetation.  
\*Refers to the number of turbines for which blade tips can be seen rather than the number of individual tips seen from the viewpoint.



Drawn by ET  
Checked by TH  
Approved by LK

TL010  
08/04/2025  
40418\_PM\_C002b

