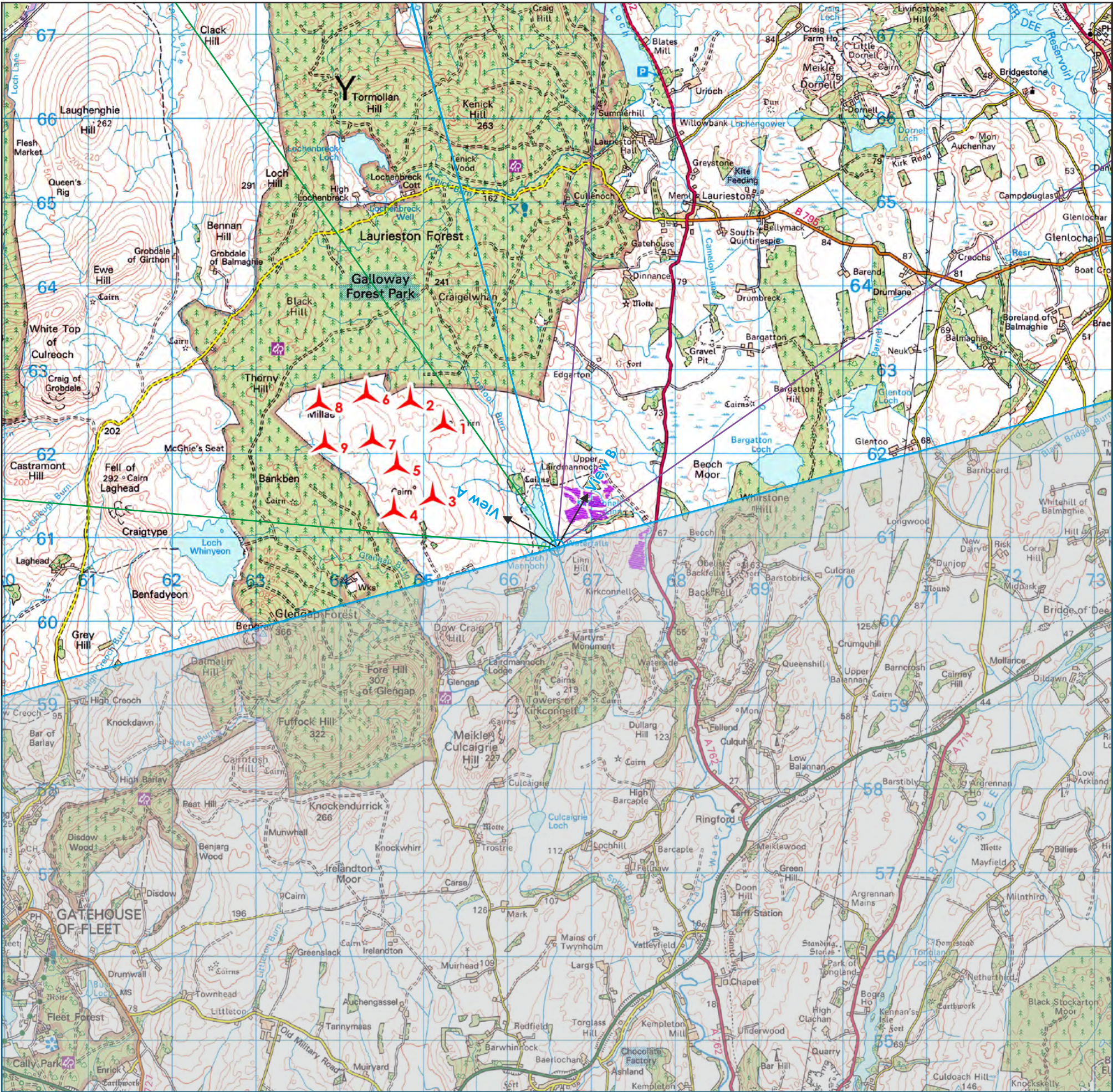


Reproduced by permission of Ordnance Survey on behalf of HMSO. © Crown Copyright and database right 2025 All rights reserved. Ordnance Survey Licence No ACO000808122 (Atmos).





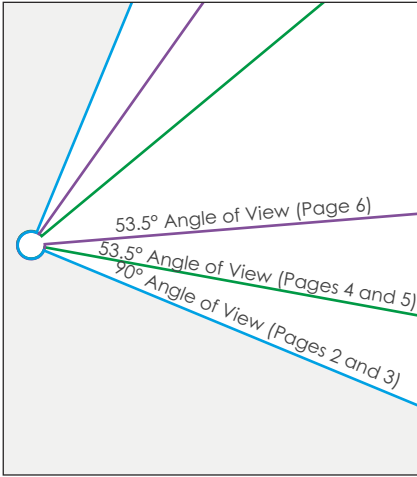
Lairdmannoch Energy Park

wind2

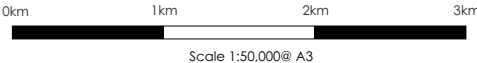
atmos
CONSULTING

Figure 10-3a
Viewpoint CH3 - Dam Overlooking (SM1033: Asset 1)

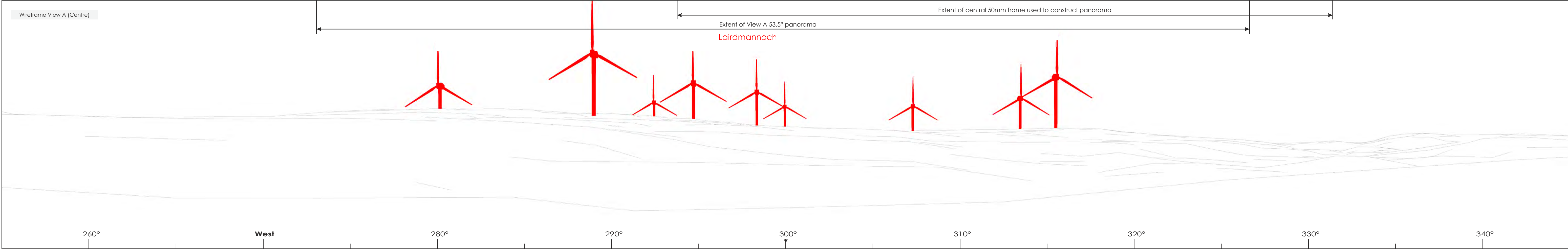
Viewpoint Data	
Grid Reference	266595, 560963
Elevation	126m AOD
Wireframe/Photograph	
Height above ground	2m
Camera and Lens	Canon 5D Mark II with fixed 50mm lens
Date	19/03/2024
Time	11:59
Proposed Turbine Information	
Hub Height	98.5m
Blade Tip Height	180m
Predicted Visibility, Distance and Direction	
Number of Turbine Tips Visible*	9
Number of Turbine Hubs Visible	9
Distance to Nearest Turbine	1.57km
Distance to Nearest Solar Panel	251m
Direction to Site Centre	300°
Proposed Turbine	
Proposed Solar Panel Extent	

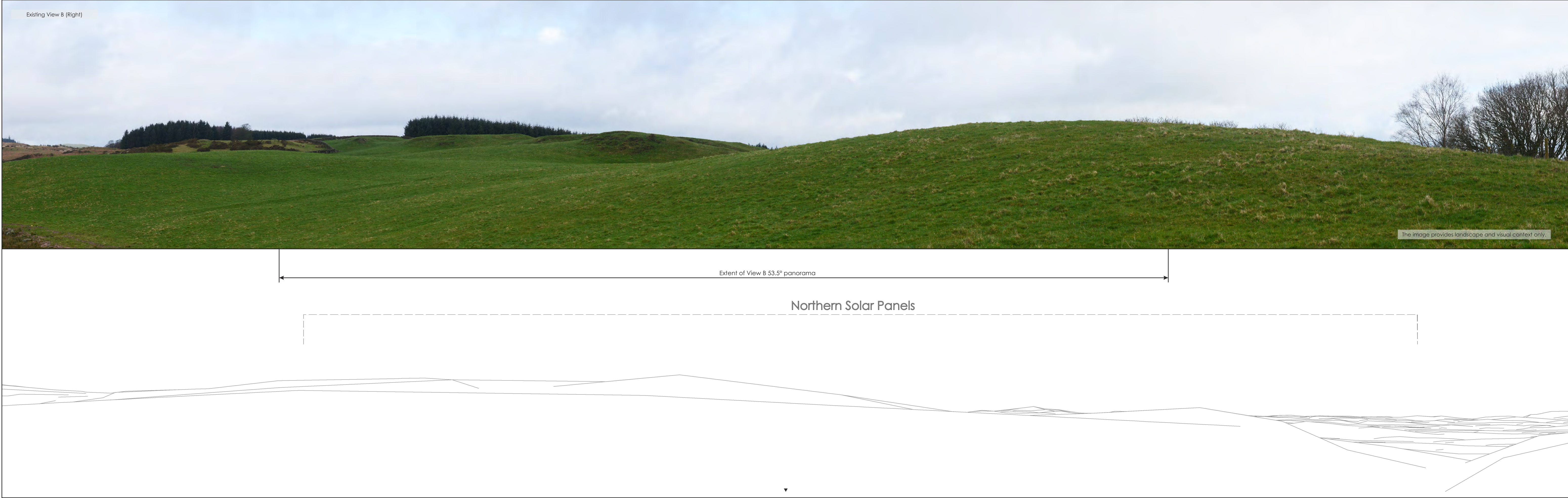


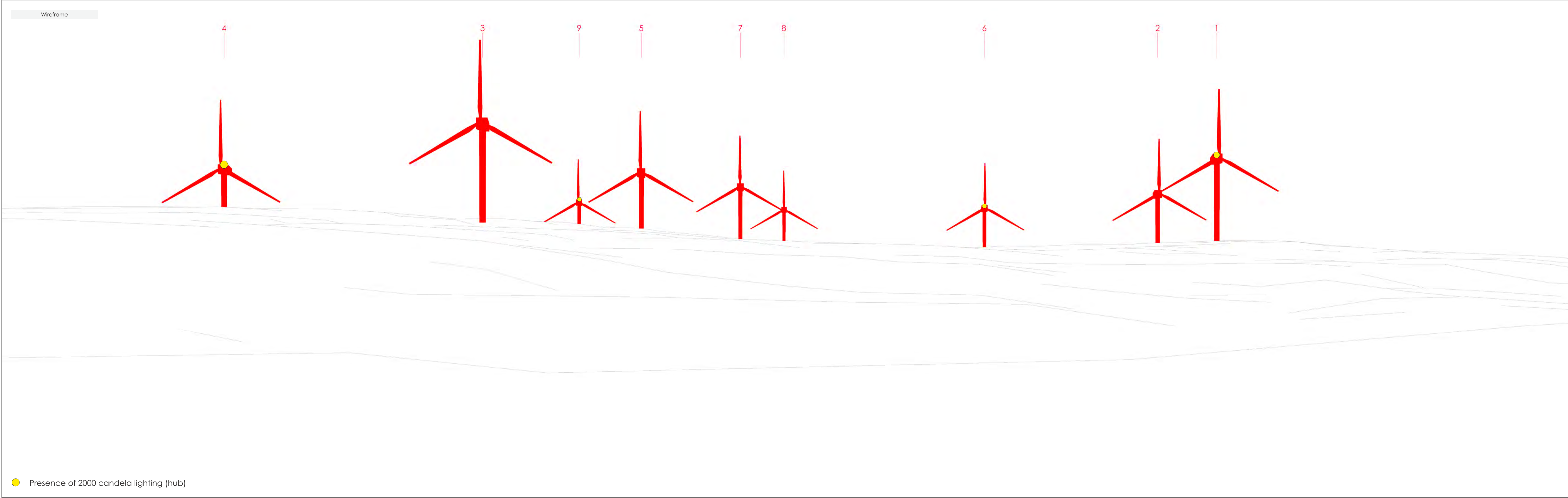
Tripod location



Wireframes are generated using Ordnance Survey's Terrain 5 Dataset which does not take into account the screening effects of buildings or vegetation.
*Refers to the number of turbines for which blade tips can be seen rather than the number of individual tips seen from the viewpoint.







Photomontage - Predicted View A



Photomontage - Predicted View B



The photomontage excludes proposed planting and therefore does not reflect potential screening mitigation.