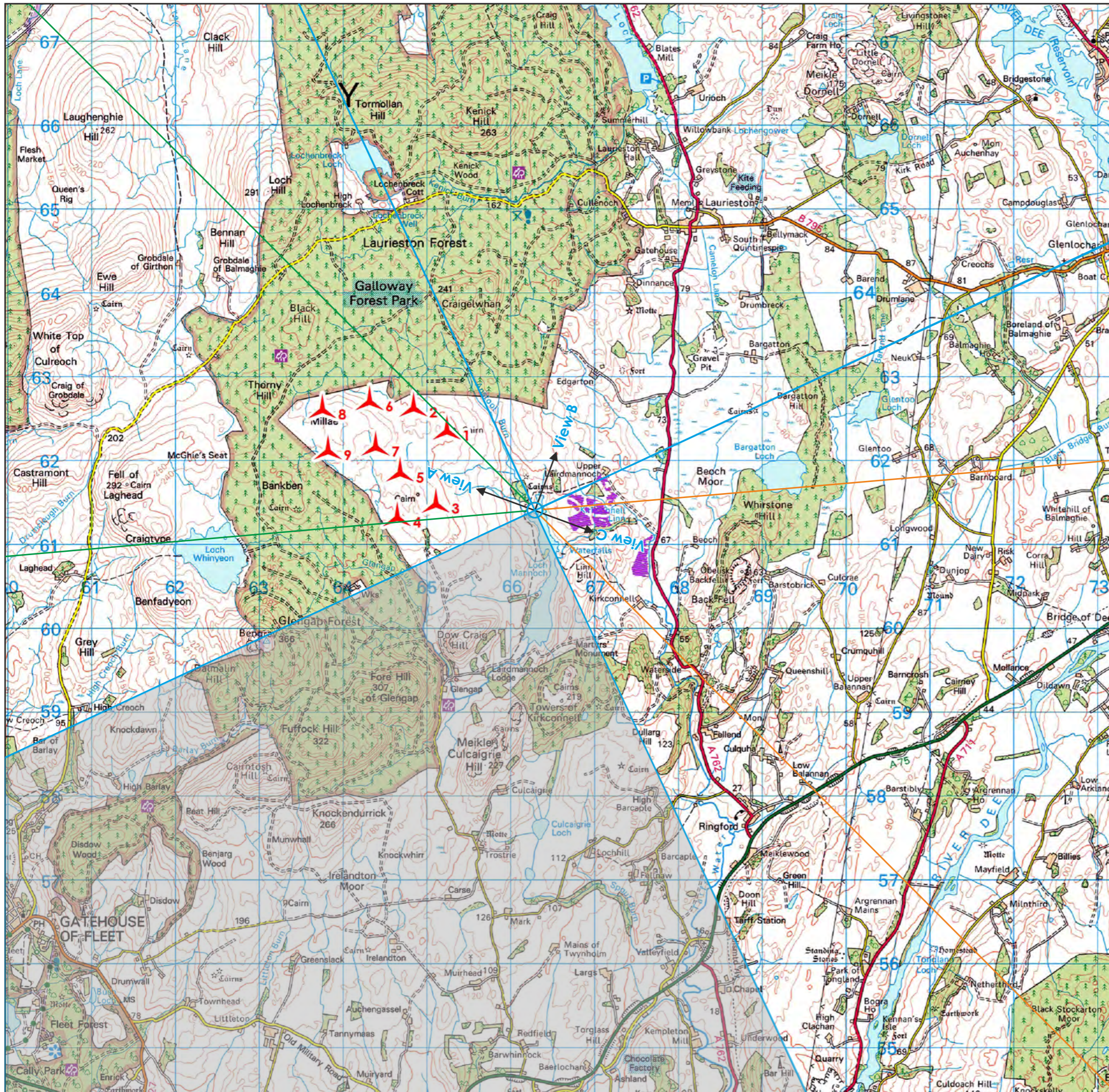


Reproduced by permission of Ordnance Survey on behalf of HMSO. © Crown Copyright and database right 2025. All rights reserved. Ordnance Survey Licence No. ACO000808122 (Atmos).



Lairdmannoch Energy Park



Figure 10-2a
Viewpoint CH2 - Loch Mannoch, Stone Circle (SM1033: Asset 1)

Viewpoint Data

Grid Reference 266290, 561433
Elevation 129m AOD

Wireframe/Photograph

Height above ground 2m
Camera and Lens Canon 5D Mark II with fixed 50mm lens
Date 19/03/2024
Time 12:35

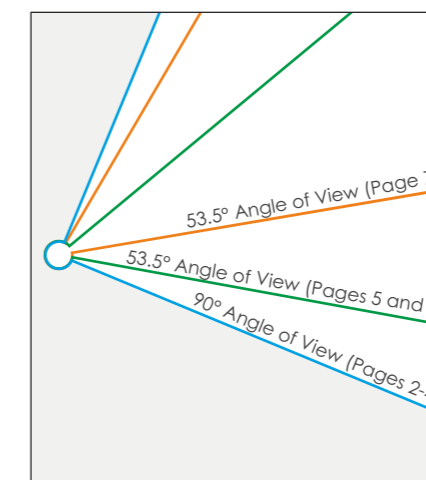
Proposed Turbine Information

Hub Height 98.5m
Blade Tip Height 180m

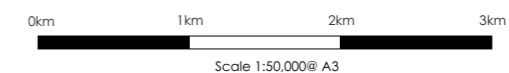
Predicted Visibility, Distance and Direction

Number of Turbine Tips Visible* 9
Number of Turbine Hubs Visible 9
Distance to Nearest Turbine 1.18km
Distance to Nearest Solar Panel 0.39km
Direction to Site Centre 290°

Proposed Turbine
Proposed Solar Panel Extent



Tripod location



Wireframes are generated using Ordnance Survey's Terrain 5 Dataset which does not take into account the screening effects of buildings or vegetation.
*Refers to the number of turbines for which blade tips can be seen rather than the number of individual tips seen from the viewpoint.



Drawn by ET
Checked by TH
Approved by LK

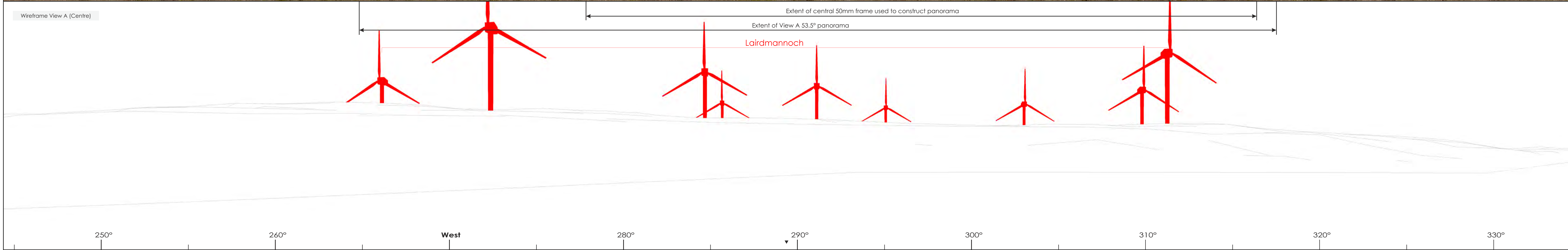
TL010
09/04/2025
40418_PM_C002b

Existing View A (Centre)



The image provides landscape and visual context only.

Wireframe View A (Centre)

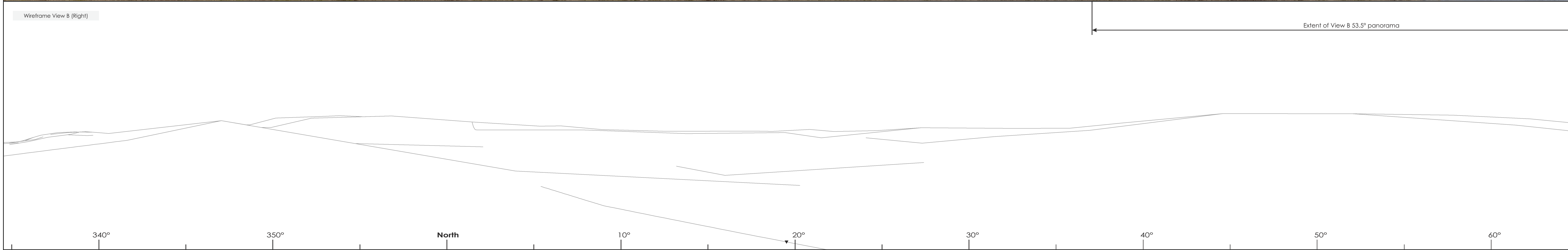


Existing View B (Right)



The image provides landscape and visual context only.

Wireframe View B (Right)



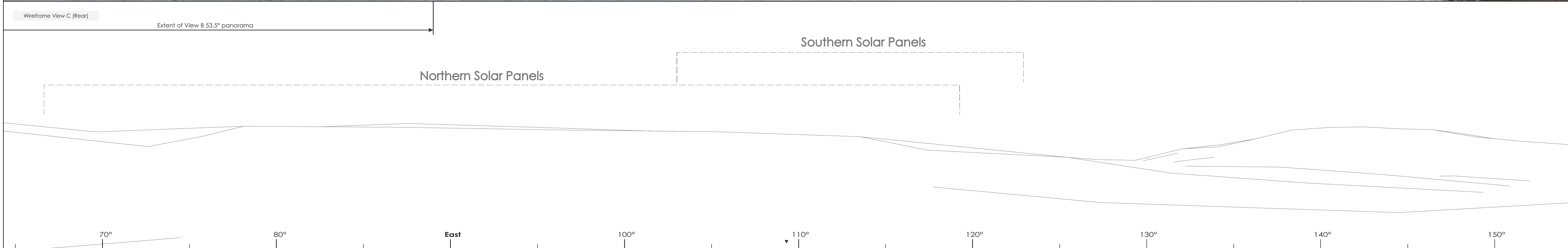
Existing View C (Rear)



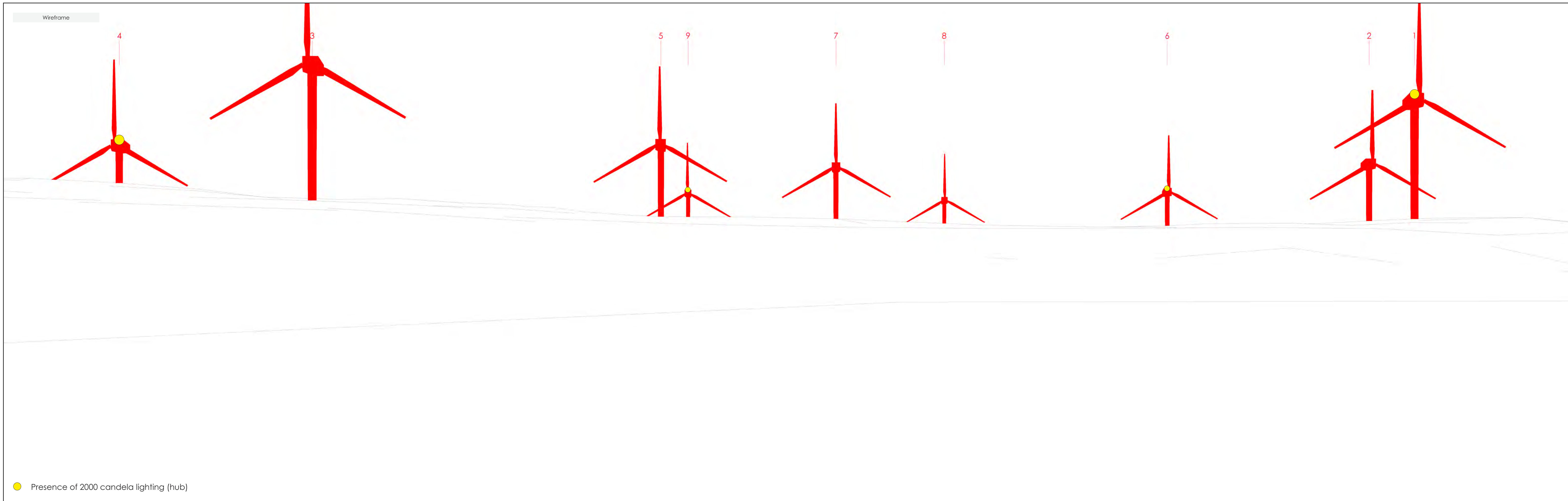
The image provides landscape and visual context only.

Wireframe View C (Rear)

Extent of View B 53.5° panorama



Wireframe



● Presence of 2000 candela lighting (hub)

Photomontage - Predicted View A





The photomontage excludes proposed planting and therefore does not reflect potential screening mitigation.