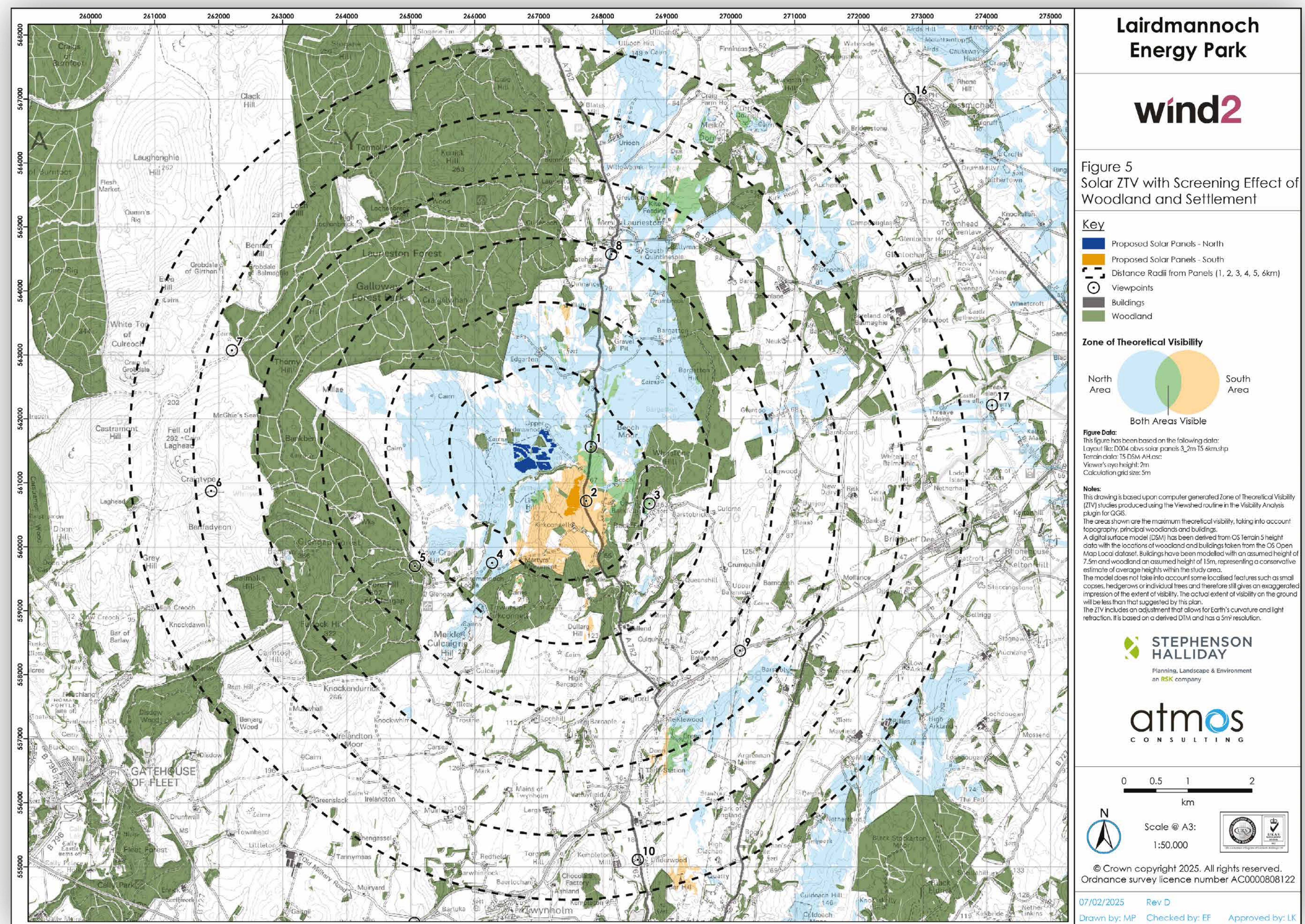
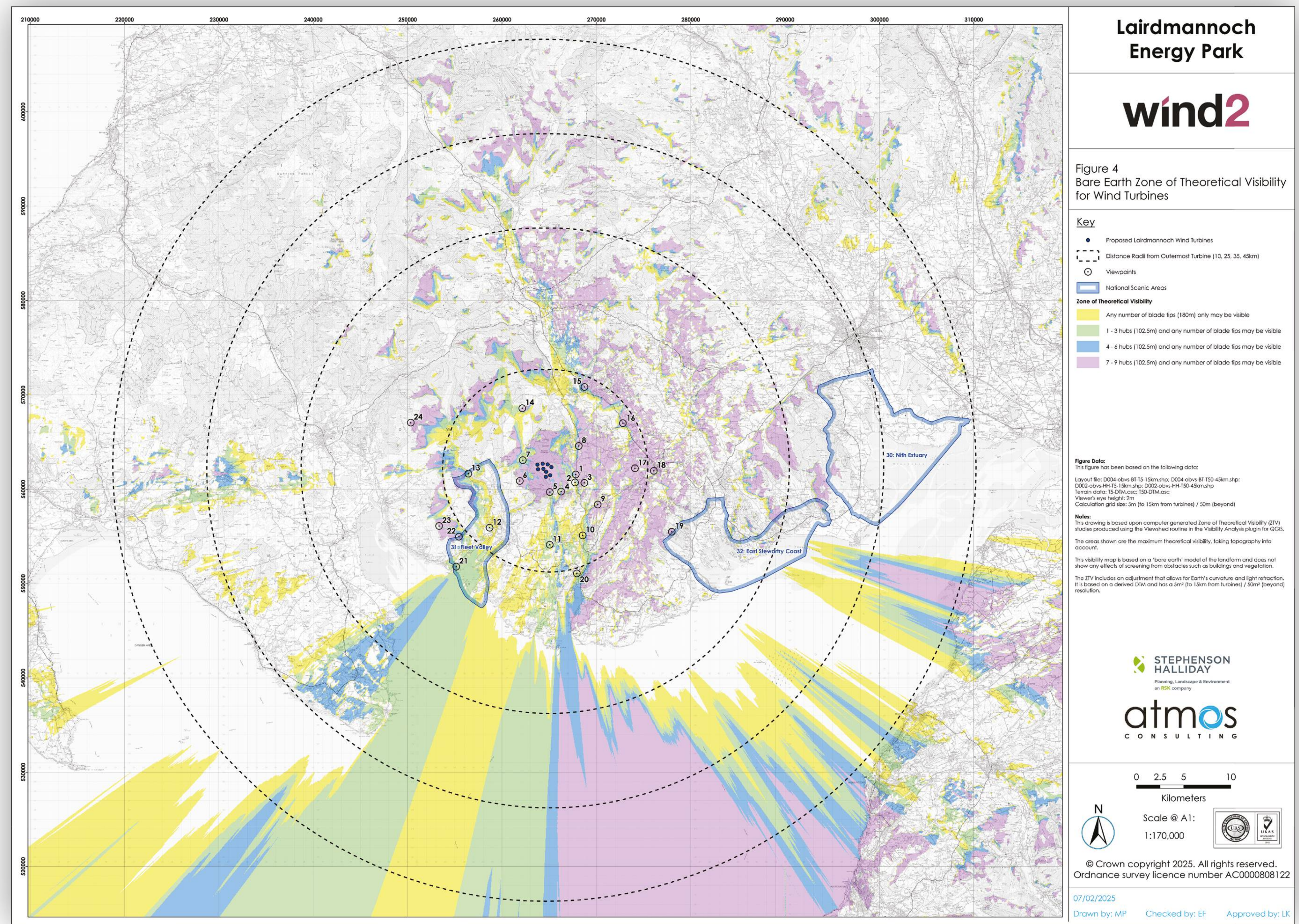


(continued)

1888

The viewpoints have been chosen in consultation with statutory consultees to illustrate the potential visibility of the proposed wind turbines and solar panels from key viewpoints. The potential view from six key viewpoint locations are shown on the following boards to illustrate what the proposed energy park would look like if constructed.



View this information via the QR code below:



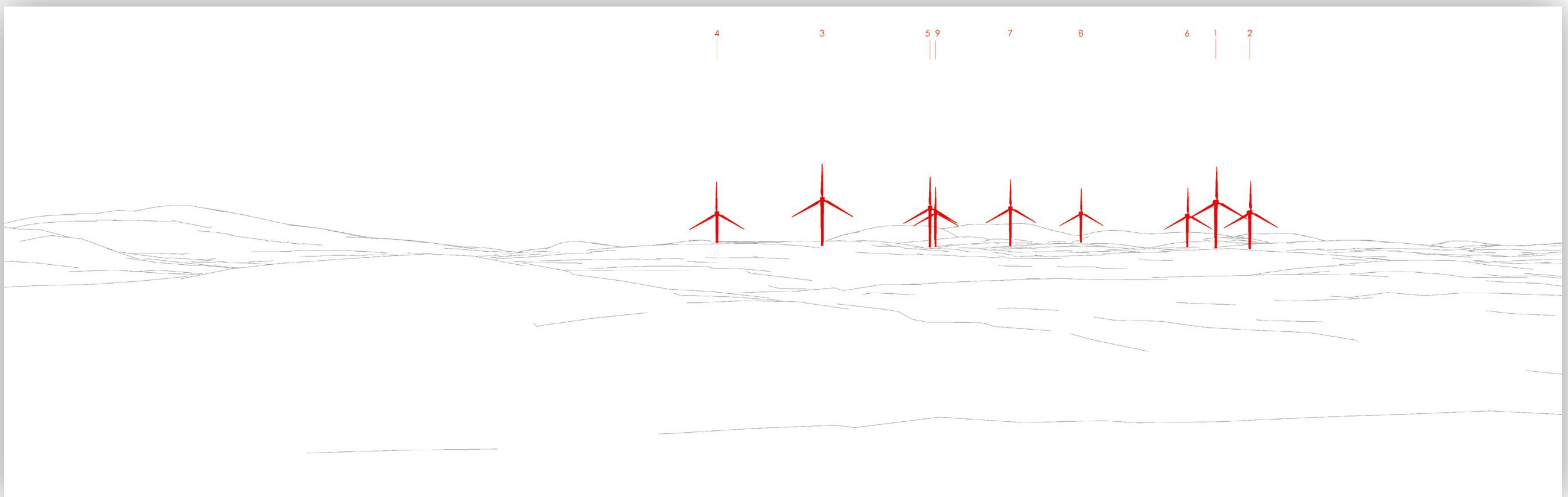
wind2

lairdmannochenergypark.co.uk



Viewpoint 3 – Neilson’s Monument

Wireframe

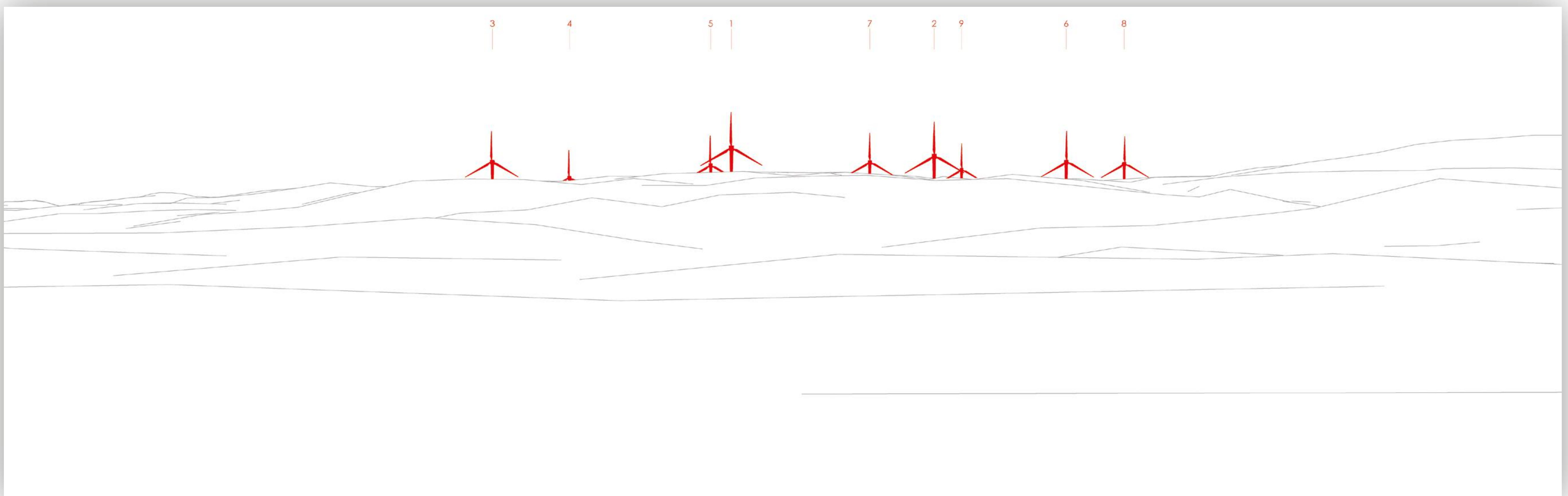


Photomontage



Viewpoint 8 – Laurieston

Wireframe



Photomontage



View this information via the QR code below:



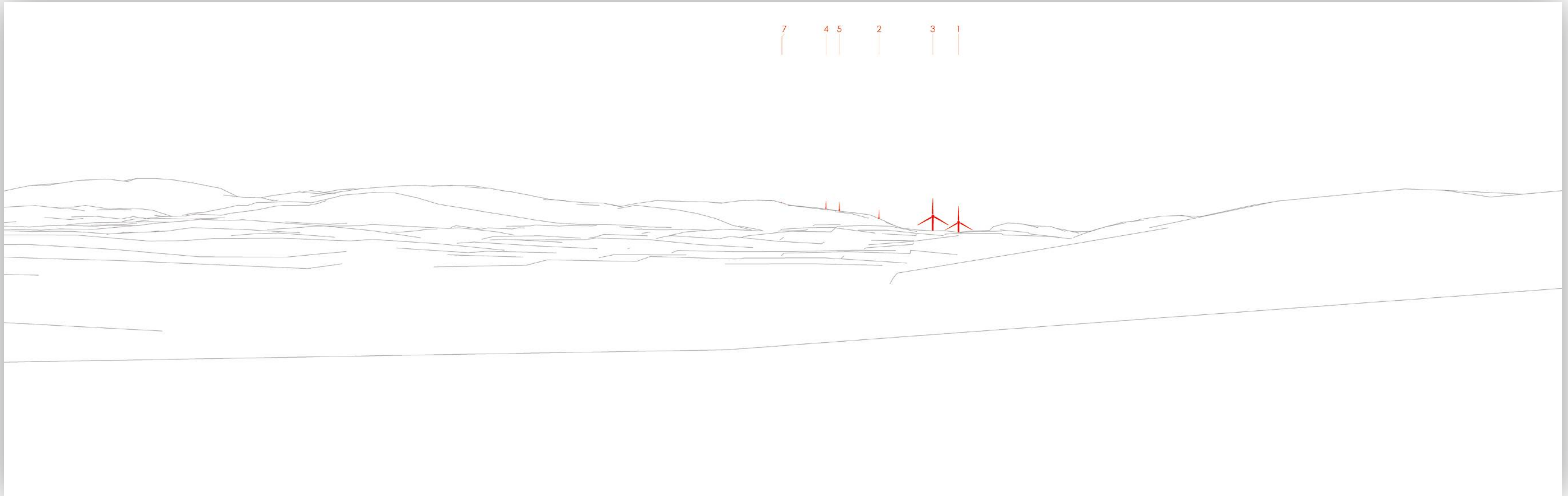
wind2

lairdmannochenergypark.co.uk



Viewpoint 11 – Milnthird (W) (A75 SW of Castle Douglas)

Wireframe

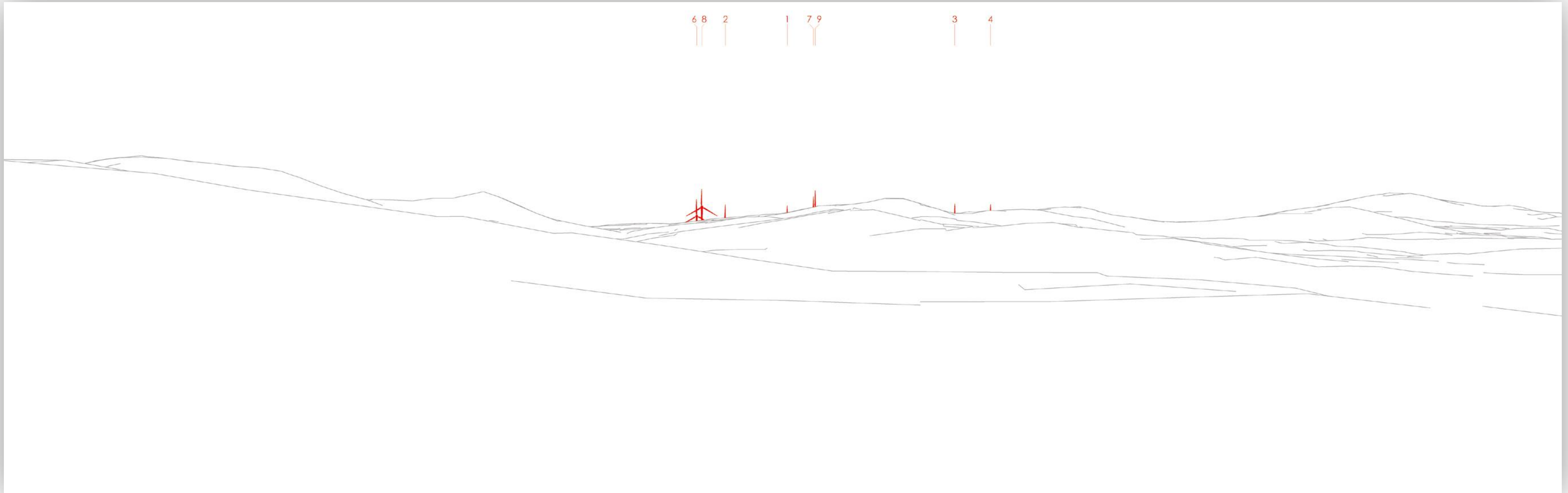


Photomontage



Viewpoint 13 – B796 near Upper Rusko (within the Fleet Valley NSA)

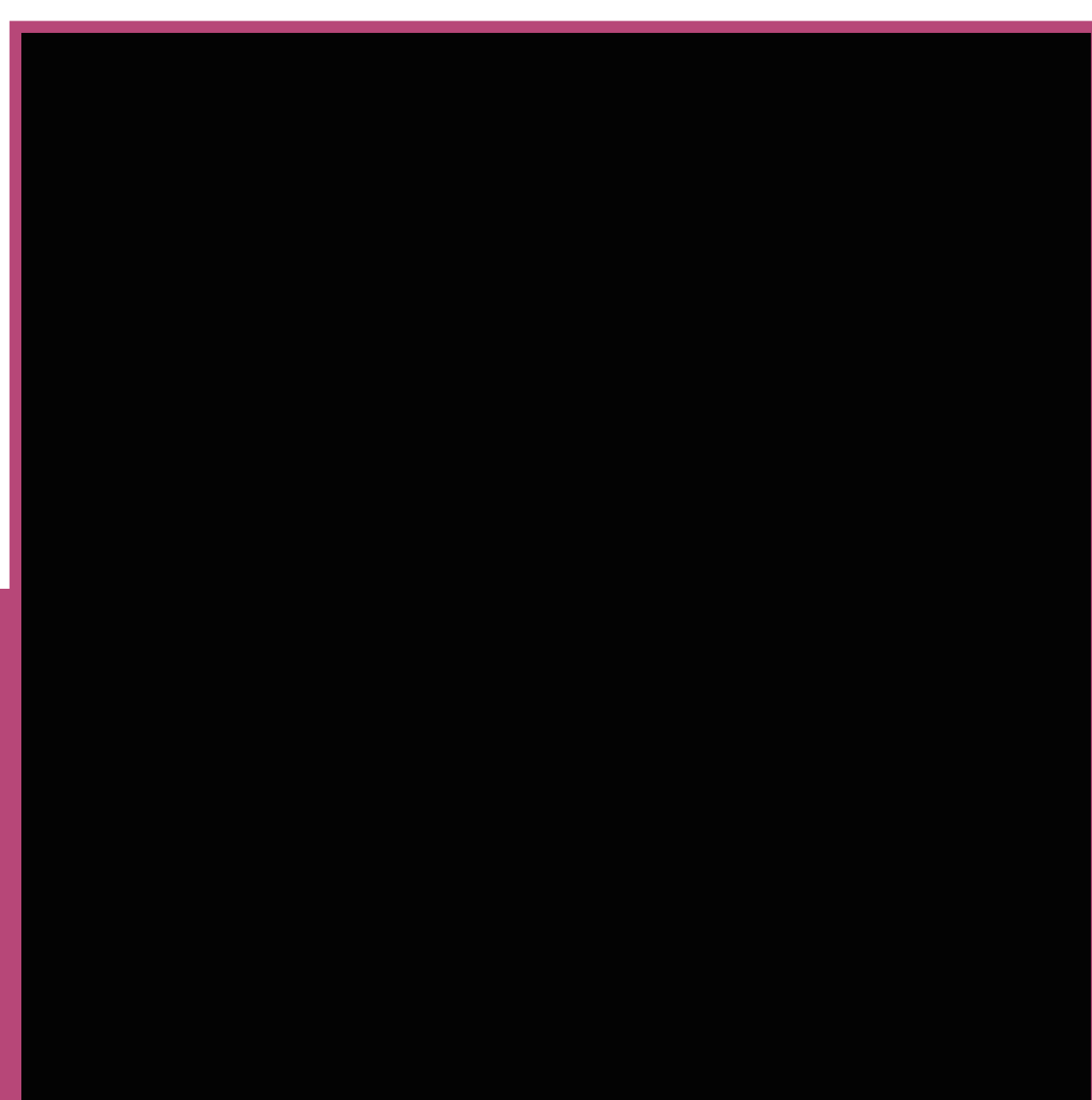
Wireframe



Photomontage



View this information via the QR code below:



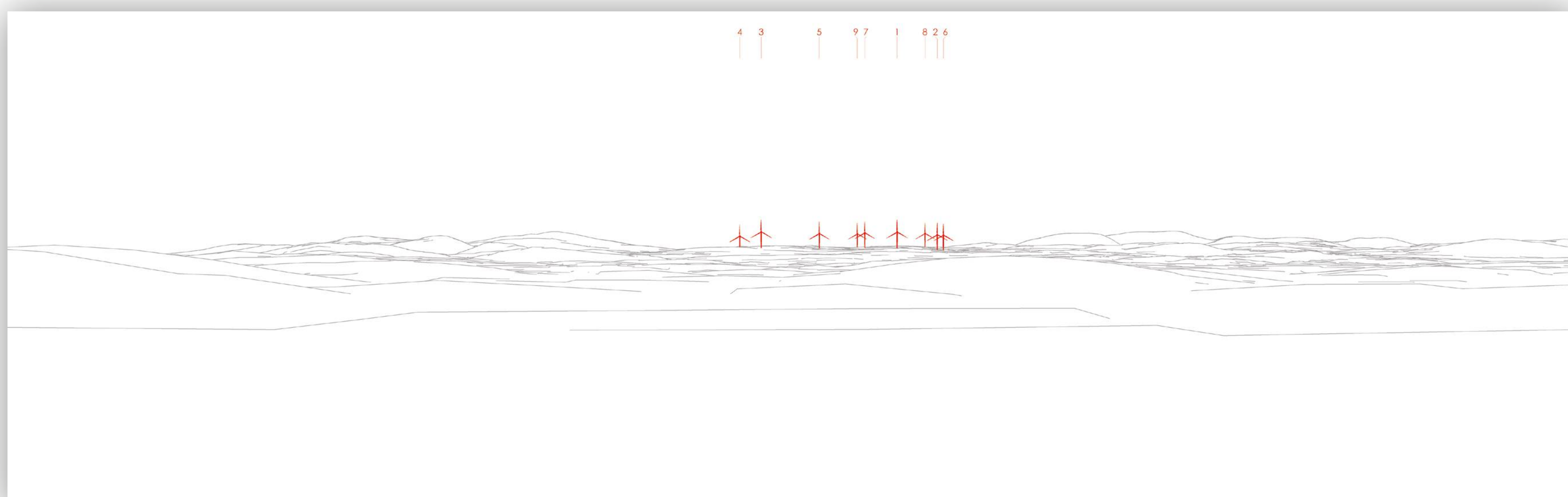
wind2

lairdmannochenergypark.co.uk



Viewpoint 18 – Castle Douglas

Wireframe



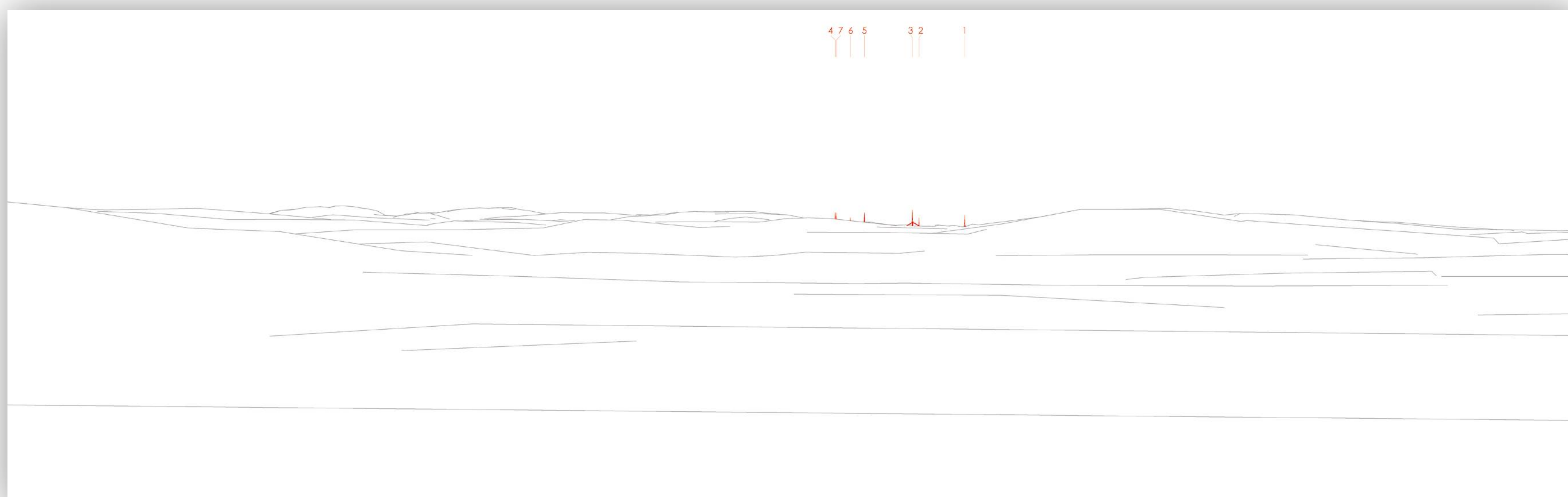
Photomontage



Viewpoint 20 – Kirkcudbright

Wireframe

Wireframe



Photomontage



View this information via the QR code below:



wind2

lairdmannochenergypark.co.uk





Lairdmannoch Energy Park

Environmental Impact Assessment (continued)

Other Considerations

A review of the project's impact on Aviation and Telecommunications networks will be undertaken. There will also be an assessment of the potential for Shadow Flicker from the turbines as well as glint and glare from the solar panels.

Battery Storage

Battery storage is included in the plans for Lairdmannoch Energy Park.

The suite of assessments will include a Drainage Impact Assessment in line with SEPA requirements and a Firewater Management Plan in line with the National Fire Chiefs Council (NFCC) Guidance.

Proposed Galloway National Park

In July 2024, Galloway was selected as the preferred area for the third National Park in Scotland. NatureScot are leading a consultation to gauge both support and opposition as well as specifics including the proposed boundary and objectives. A final decision by the Scottish Government is anticipated in 2026.

The proposed energy park currently sits within the proposed Galloway National Park Boundary.

National Planning Framework 4 (NPF4) (policy 11) does not support the development of wind farms in National Parks; however Scottish Ministers plan to adopt a different approach for the third National Park stating that:

'To ensure any National Park addresses the climate emergency and supports progressive development, we will develop new bespoke planning policy on onshore wind to be applied in new National Parks. This means that a new National Park will be treated differently to existing National Parks with respect to NPF4 policy for onshore wind.'



View this information via the QR code below:



wind2

lairdmannochenergypark.co.uk





Lairdmannoch Energy Park

Community Benefit Fund

Community Benefit Fund

Should the project be approved, Lairdmannoch Energy Park will provide a community benefit fund equivalent to £5,000 per megawatt (MW) of installed wind capacity and £500 per megawatt (MW) of installed solar capacity on the site, payable each year of the energy park's operational lifetime.

Based on an installed capacity of approximately 100MW, this would provide up to an annual community benefit fund of £310,000. Assuming an operational lifetime of 30 years, this would translate into a total community benefit fund of up to £9.3million to be invested in local priorities and projects over that period.

We are keen to ensure that the local community derives maximum benefit from the proposed community benefit fund. We therefore invite you to give us your feedback on potential local priorities and projects where you would like to see the fund invested.

We learnt that most respondents from our first round of public consultation would like the community benefit fund used to reduce their energy bills (over 45%), as such, we plan to explore this further.

For an overview of feedback received from the first round of public consultations, please visit the website.

Community Shared Ownership

In addition to this commitment, Wind2 is exploring potential models for community shared ownership. This would provide an opportunity for the local communities around the site to acquire up to a 10% stake in the proposed energy park.

Further information regarding community ownership is available at:

www.localenergy.scot

Let us know what your thoughts on these ideas, particularly if you have experience of or are interested in community ownership, via the QR code below.

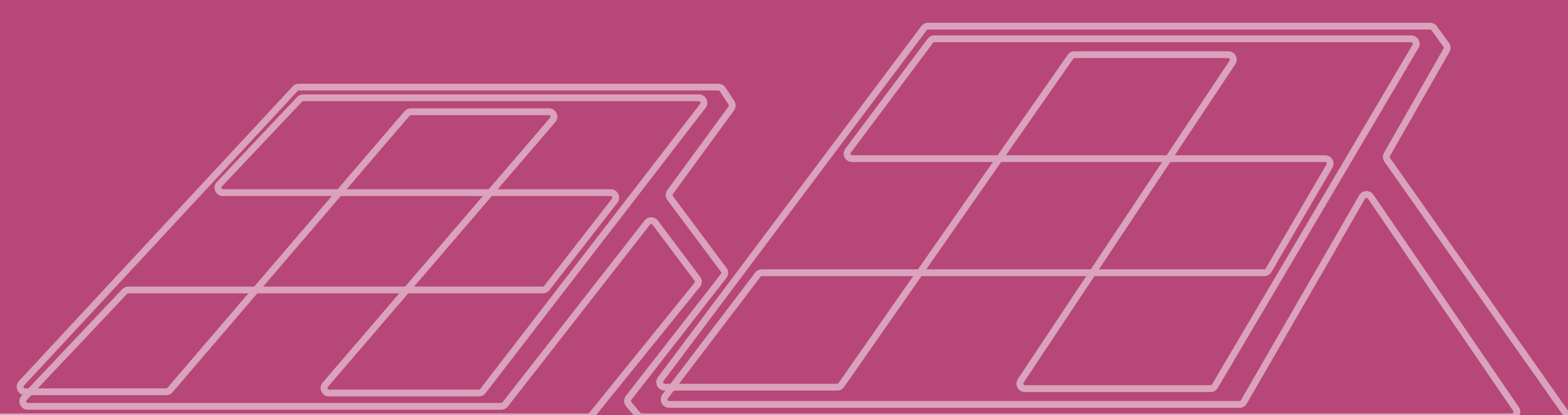


View this information via the QR code below:



wind2

lairdmannochenergypark.co.uk





Lairdmannoch Energy Park

Timeline

We anticipate submitting a Section 36 application to the Energy Consents Unit in Spring 2025.



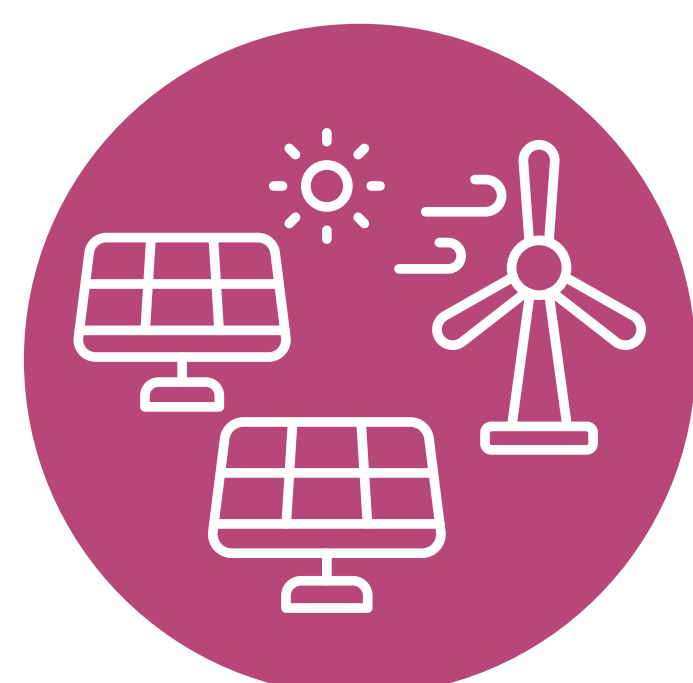
Second round of Public Consultation
– Early 2025



Submit Section 36 Application
– Spring 2025



Decision by Scottish Ministers
– Spring 2026



Energy Park Operational
– Autumn 2030

Your Feedback

If you can, please take a few minutes to provide further feedback via the QR code, the tablet or by completing the feedback form. If there's any aspect of the proposed development you'd like to discuss in more detail, please to speak to a member of the project team.

Please note that comments made to Wind2 are not representations made to the Energy Consents Unit. There will be the opportunity to make direct representations to the Energy Consents Unit when the planning application is submitted.

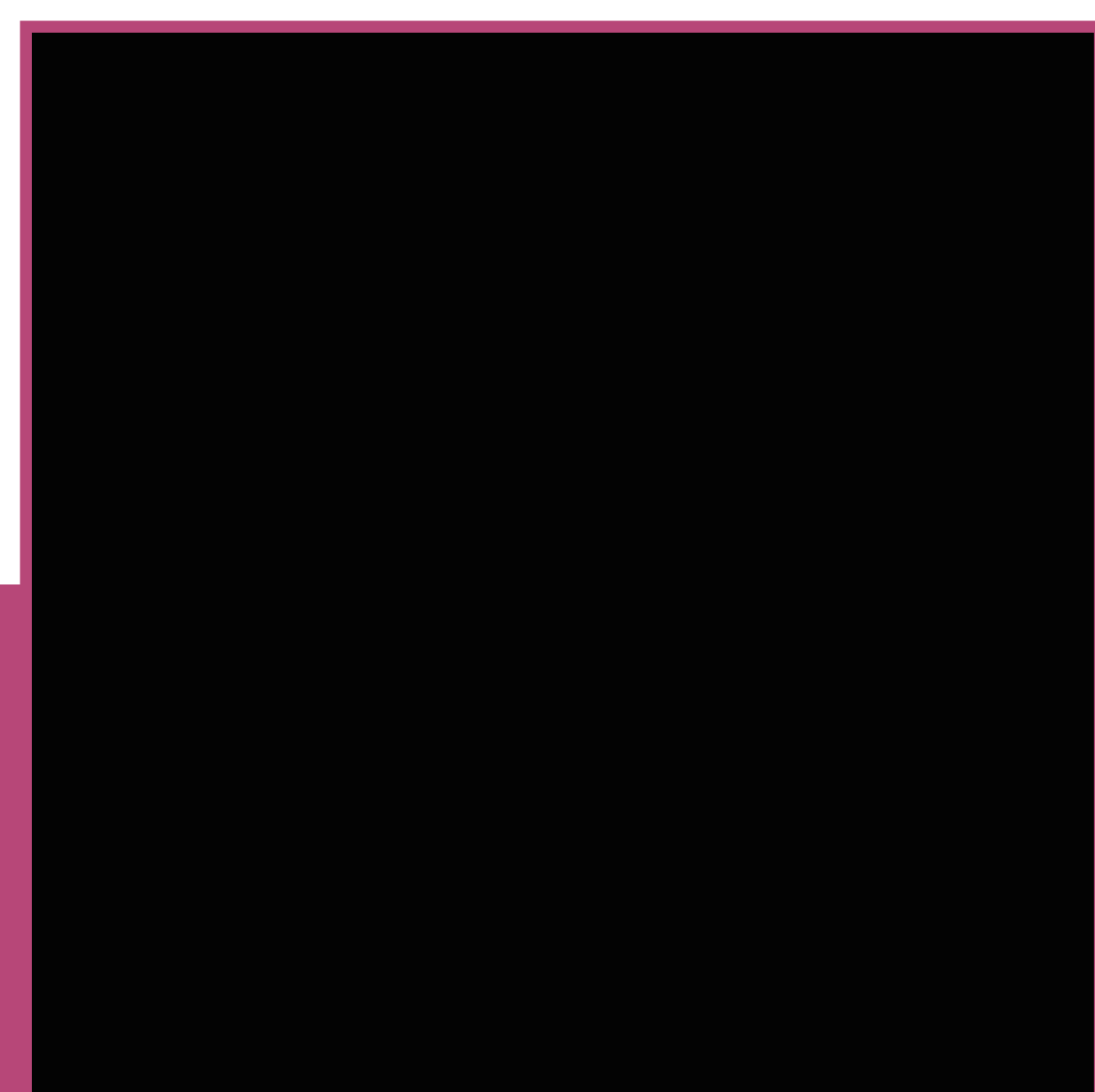
Feedback QR code:



You can also complete the feedback form online at:
lairdmannochenergypark.co.uk/feedback
or write to us or send us your completed feedback form via the following address:
Wind 2 Limited, 2 Walker Street, Edinburgh, EH3 7LB.

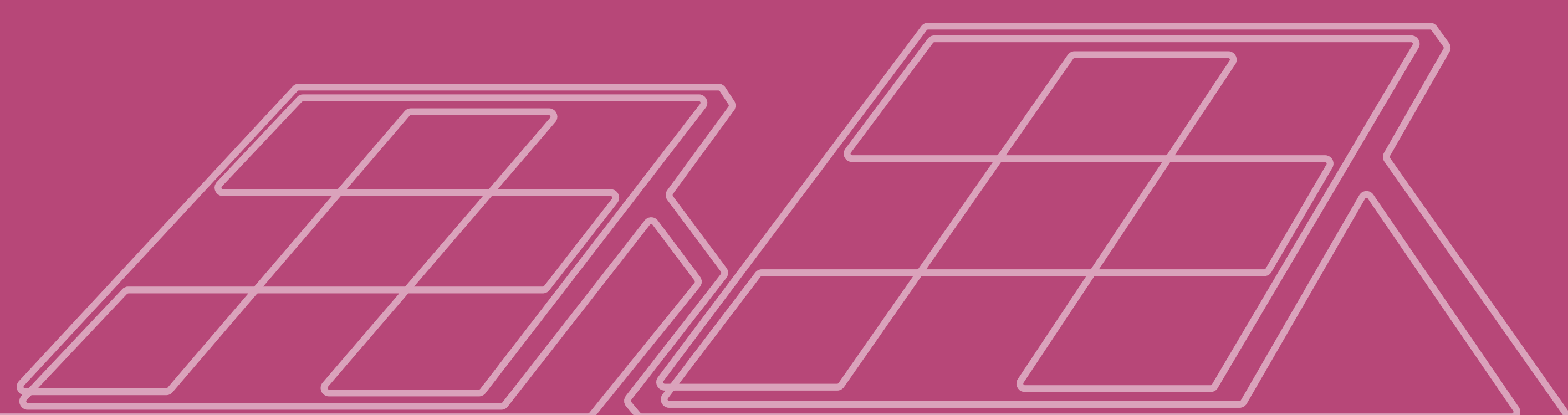
To give members of the local community sufficient time to give us their thoughts and feedback on the community benefit fund, we have set a deadline of Friday 14th March 2025 to send us responses.

View this information via the QR code below:



wind2

lairdmannochenergypark.co.uk



Appendix F Exhibition Presentation



Lairdmannoch Energy Park

10th March 2025 - 7pm

Wind2 – Niall Hunter & Pippa Ross

wind2

Project Summary

- The Energy Park is proposed to consist of:
 - Up to nine **wind turbines** at 180m to tip
 - Up to 20MW of **ground mounted solar panels**
 - Up to 20MW of **battery storage**
 - Access tracks and associated infrastructure
- Approximately 100MW Scheme – Section 36 Application to Scottish Government Energy Consents Unit
- The project has the potential to generate around 222,254 megawatt hours (MWh) of electricity annually, equivalent to meet the needs of approximately **67,451 homes**, while offsetting approximately 96,013 tonnes** of CO² per annum.
- Site surveys are mostly complete, and the assessment work is in progress
- The Environmental Impact Assessment will accompany the final Section 36 application to be submitted to the Energy Consents Unit in **Spring 2025**.
- The project will connect directly to the grid through the Kendoon to Tongland reinforcement line

Project Summary



About the Applicant

octopus energy
generation

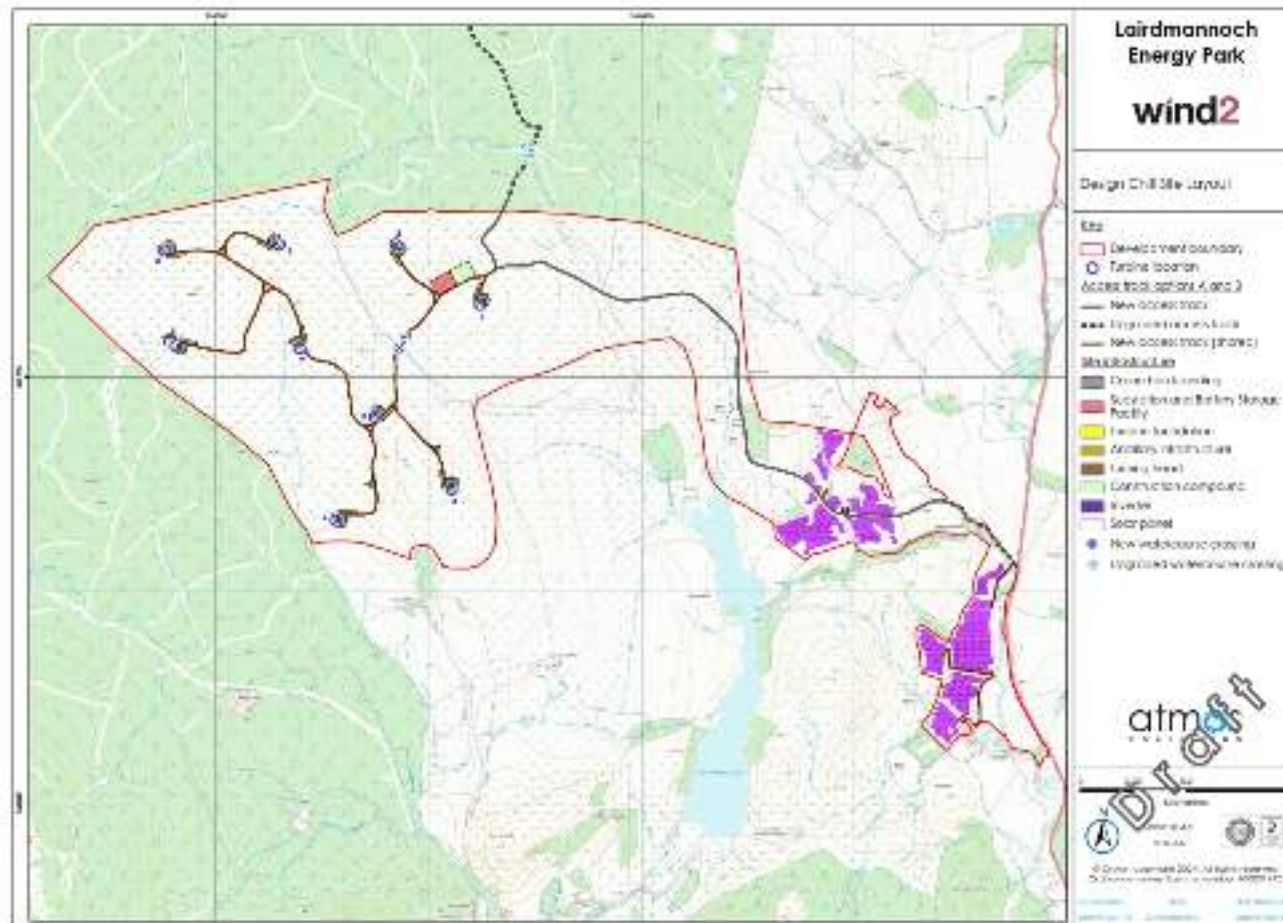
wind2

- The Applicant is Lairdmannoch Energy Park Limited, a joint venture between Wind 2 Limited (Wind2) and companies managed by Octopus Energy Generation. Wind2 is a UK-based, independently owned, specialist renewable energy developer, working on a range of renewable energy projects across the UK.
- The company has teams in Edinburgh, Cromarty, Wells (Somerset) and Mold (North Wales).
- Octopus Energy Generation is one of Europe's largest investors in renewable energy assets and energy transition projects, managing more than 300 large-scale green energy projects spanning 13 countries across technologies including onshore wind, offshore wind and solar energy

wind2

wind2

wind2



Lairdmannoch Energy Park Community Feedback



67 Respondents



90% of respondents are residents, business owners or community council members living within 10km/6 miles radius of the energy park site.



20% of respondents are either strongly or somewhat supportive of the project.



66% of respondents are either strongly or somewhat opposed to the project.



During the exhibition and via the feedback form, concerns regarding the access route were raised. As such the Wind2 team have reviewed the route and have presented an alternative at the 2nd round of exhibitions.



Many of the queries raised have been addressed via the FAQs page.



74% of respondents would like the community benefit fund used to reduce energy and used towards residential renewable energy technology.

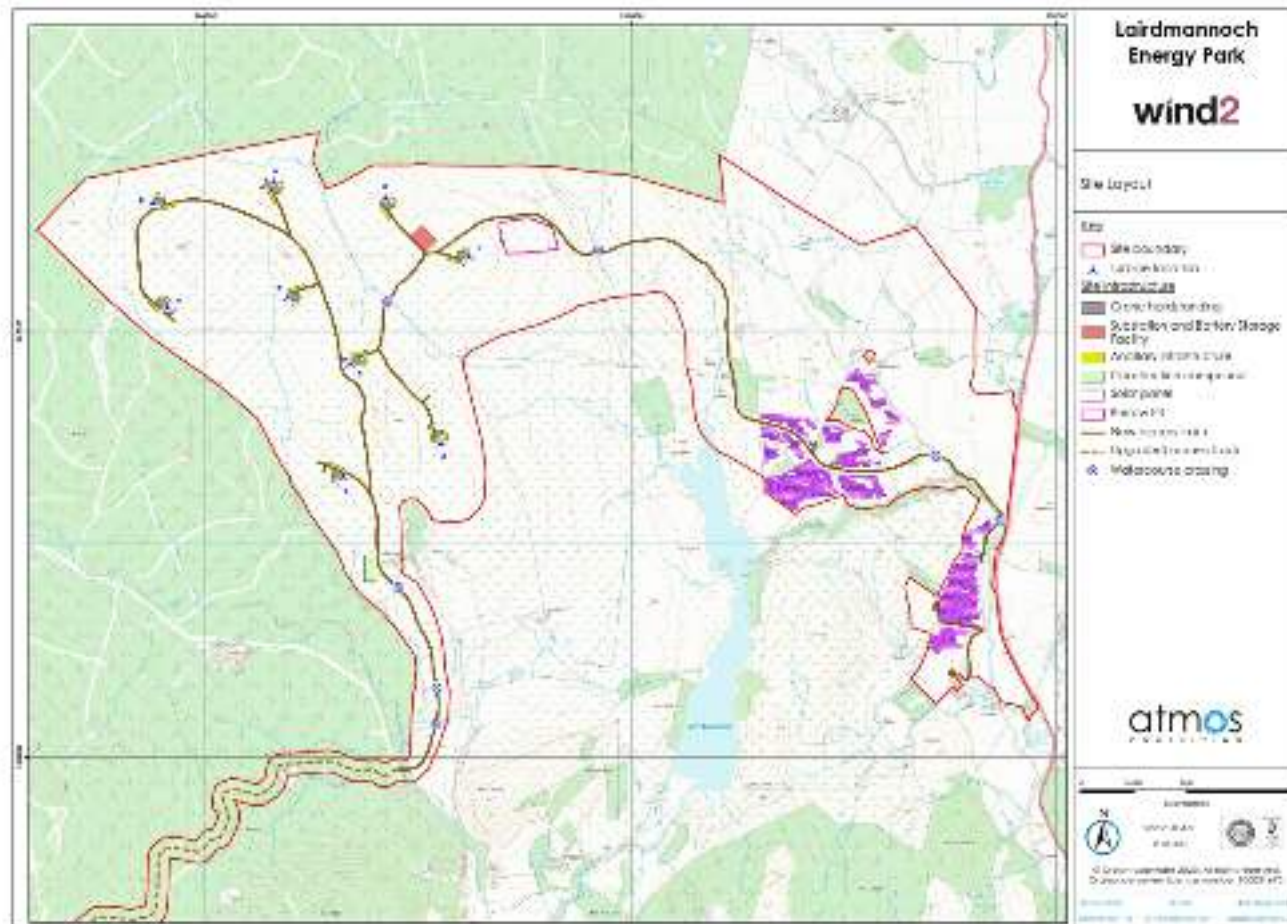


Lairdmannoch Energy Park



wind2

wind2





Project Changes Following September 2024 Consultations

The following changes were implemented following further environmental surveys, assessments and the feedback received at the September 2024 Public Exhibitions:

- Access:
 - Following the first round of public consultations, the project team received extensive feedback with regards to the initially proposed transport route through Laurieston. Concerns were expressed particularly in relation to volume of traffic, noise and traffic management in the village.
 - We therefore delayed the anticipated submission of the project to the Energy Consents Unit and as a result, have investigated an alternative route.
 - It is now anticipated that wind turbine components will travel as Abnormal Indivisible Loads **via the A75 and onto the B727 (Old Military Road) to the east of Gatehouse of Fleet. From here components will travel along the B727 onto an existing forestry track leading to the Glengap Forest and onto site from the southwest.**
 - This is the preferred option which will minimise disruption to communities in the vicinity of the project.

Continued...

- Turbine Locations:
 - The turbine locations have changed very slightly to accommodate constraints identified in the final surveys.
 - Two of the turbines have been pushed slightly further east to protect views from the Loch Mannoch Cairn and Stone Circle as much as possible.
 - Many of the turbines have been micrositied to avoid areas of deep peat.
- Solar Panels:
 - The solar has been redesigned to carefully consider the nearby residential properties, nearby archaeology and to make better use of the land available.
 - Panels have now been removed in the easternmost parcel of the solar site to restrict any visibility from the Loch Mannoch Cairn and Stone Circle.
 - Panels have now been removed in the southernmost parcel of the solar site to shield views from the nearby residential properties at Kirkconnell.
- Access Tracks:
 - Access tracks have been redesigned to accommodate new access to the site from the Southwest.
 - They have also been redesigned to avoid sensitive onsite archaeology and areas of deep peat.

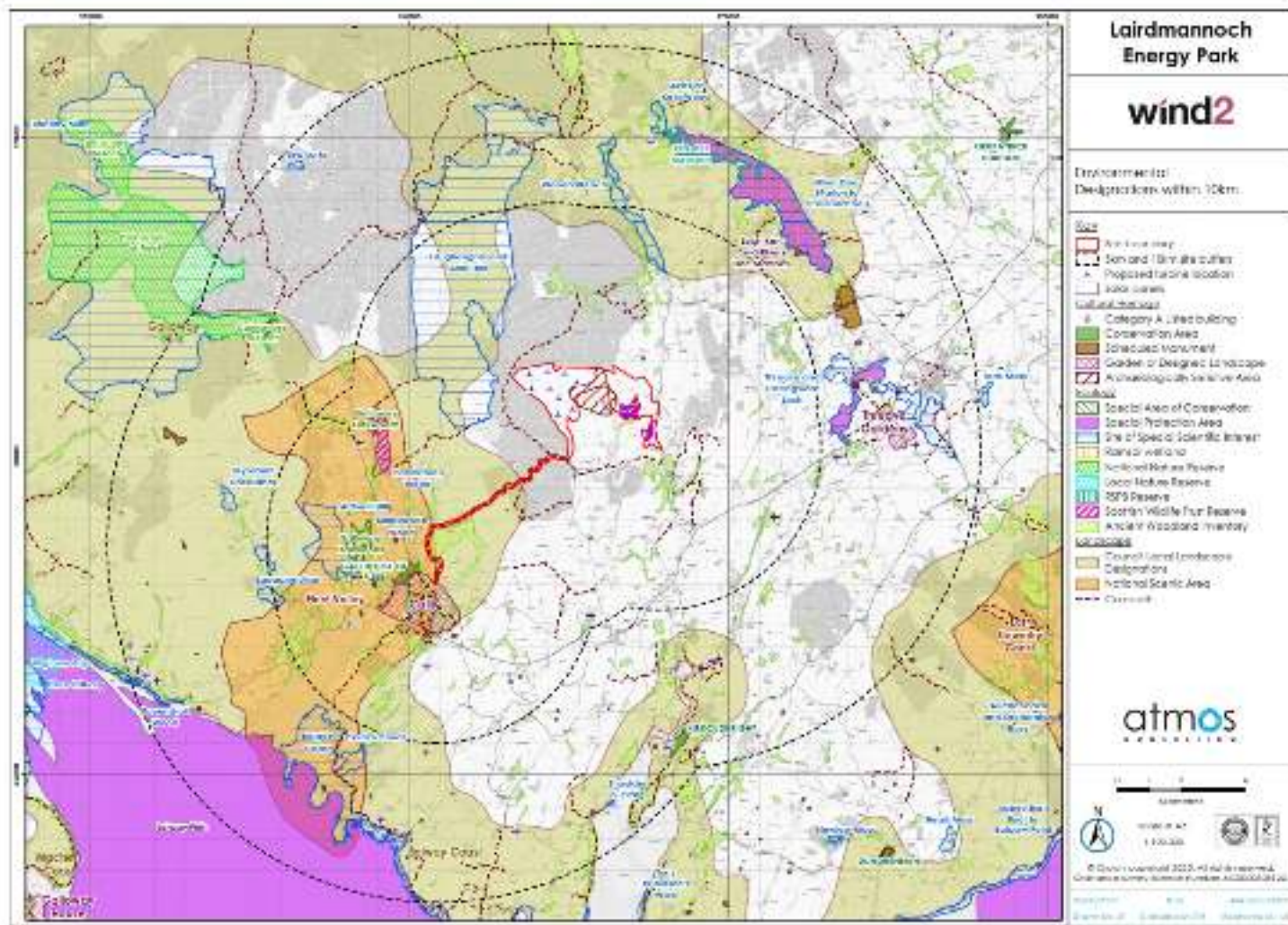
Environmental Impact Assessment

The environmental impact assessment includes:

- **Ecology & Ornithology:** Extensive wildlife surveys (birds, bats, plants) have been conducted since 2019 to minimise impact on local ecosystems.
- **Water & Soil:** The project is designed to protect water and soil. Peat surveys have been carried out and infrastructure will be located away from areas of deeper peat wherever possible. The project is expected to offset its carbon footprint within 1-2 years.
- **Flood Risk:** A full flood risk assessment will be completed to ensure minimal impact to sensitive receptors.
- **Cultural Heritage:** The project layout has been carefully designed to minimise impact on nearby historical sites as much as possible.
- **Noise:** Noise levels during construction and operation (from turbines and the solar farm) will be carefully managed and comply with all regulations.
- **Economy:** The project will be assessed for its positive economic impact, including job creation and local benefits.
- **Landscape:** A detailed visual impact assessment is being carried out from key viewpoints, agreed with the council and NatureScot. Visualisations (photomontages and wirelines) will be available

Environmental Impact Assessment continued...

- **Traffic & Transport:** Vehicle movements throughout the construction and operation of the proposed energy park will be carefully assessed through the traffic & transport assessment and controlled by a Construction Traffic Management Plan (CTMP). The CTMP would be prepared in consultation with the Roads Authority and agreed with Dumfries and Galloway Council. An Outline CTMP will be submitted as part of the Section 36 Application.
- **Battery Storage:** The suite of assessments will include a Drainage Impact Assessment in line with SEPA requirements and a Firewater Management Plan in line with the National Fire Chiefs Council (NFCC) Guidance.
- **Other Considerations:** A review of the project's impact on Aviation and Telecommunications networks will be undertaken. There will also be an assessment of the potential for Shadow Flicker from the turbines as well as glint and glare from the solar panels.



Community Benefits

Community Benefit Fund

Should the project be approved, Lairdmannoch Energy Park will provide a community benefit fund equivalent to £5,000 per megawatt (MW) of installed wind capacity and £500 per megawatt (MW) of installed solar capacity on the site, payable each year of the energy park's operational lifetime.

Based on an installed capacity of approximately 100MW, this would provide up to an annual community benefit fund of £310,000. Assuming an operational lifetime of 30 years, this would translate into a total community benefit fund of up to £9.3million to be invested in local priorities and projects over that period.

We are keen to ensure that the local community derives maximum benefit from the proposed community benefit fund. We therefore invite you to give us your feedback on potential local priorities and projects where you would like to see the fund invested.

We learnt that a significant portion respondents from our first round of public consultation would like the community benefit fund used to reduce their energy bills (over 45%), as such, we plan to explore this further.

Community Benefits

Community Shared Ownership

Wind2 is exploring potential models for community shared ownership.

This would provide an opportunity for the local communities around the site to acquire up to a 10% stake in the proposed energy park.

Further information regarding community ownership is available at:

www.localenergy.scot

Let us know what your thoughts on these ideas, particularly if you have experience of or are interested in community ownership, via the QR code below.



Timescales

We anticipate submitting a Section 36 application to the Energy Consents Unit in Spring 2025.



Second round of Public Consultation
– Early 2025



Submit Section 36 Application
– Spring 2025



Decision by Scottish Ministers
– Spring 2026



Energy Park Operational
– Autumn 2030

Your Feedback

If you can, please take a few minutes to provide further feedback via the QR code or by completing the feedback form.

If there's any aspect of the proposed development you'd like to discuss in more detail, please contact Wind2 using the "Contact Us" form on our website to speak to a member of the project team.

Please note that comments made to Wind2 are not representations made to the Energy Consents Unit. There will be the opportunity to make direct representations to the Energy Consents Unit when the planning application is submitted.

Feedback QR code:





Thank you!



www.lairdmannochenergypark.co.uk



Appendix G Feedback Form Results

Lairdmannoch Energy Park Community Feedback – September 2024



67 Respondents



90% of respondents are residents, business owners or community council members living within 10km/6 miles radius of the energy park site.



20% of respondents are either strongly or somewhat supportive of the project.



66% of respondents are either strongly or somewhat opposed to the project.



During the exhibition and via the feedback form, concerns regarding the access route were raised. As such the Wind2 team have reviewed the route and will be presenting an alternative at the 2nd round of exhibitions.



Many of the queries raised have been addressed via the FAQs page.



74% of respondents would like the community benefit fund used to reduce energy and used towards residential renewable energy technology.



Lairdmannoch Energy Park



Lairdmannoch Energy Park Community Feedback – February 2025



26 Respondents



73% of respondents are residents, business owners or community council members living within 10km/6 miles radius of the energy park site.



20% of respondents are either strongly or somewhat supportive of the project.



54% of respondents are either strongly or somewhat opposed to the project.



37% of respondents are opposed to the National Park



Many of the queries raised have been addressed via the FAQs page.



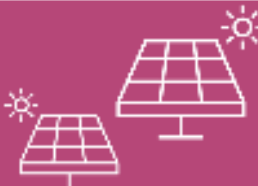
40% of respondents would like the community benefit fund used to reduce energy and used towards residential renewable energy technology.



15% of respondents would like the community benefit fund used towards residential renewable energy technology.



Lairdmannoch Energy Park



Lairdmannoch Energy Park Community Feedback – Combined



93 Respondents

74% of all respondents are residents, business owners or community council members living within 10km/6 miles radius of the energy park site.

24% of all respondents are either strongly or somewhat supportive of the project.

33% of respondents are either strongly or somewhat opposed to the project.



94% of all respondents attended the exhibitions after receiving a leaflet through their door.



Many of the queries raised have been addressed via the FAQs page.



48% of all respondents would like the community benefit fund used to reduce energy and used towards residential renewable energy technology.



Lairdmannoch Energy Park

