

Environmental Impact Assessment (continued)

Transport and Access

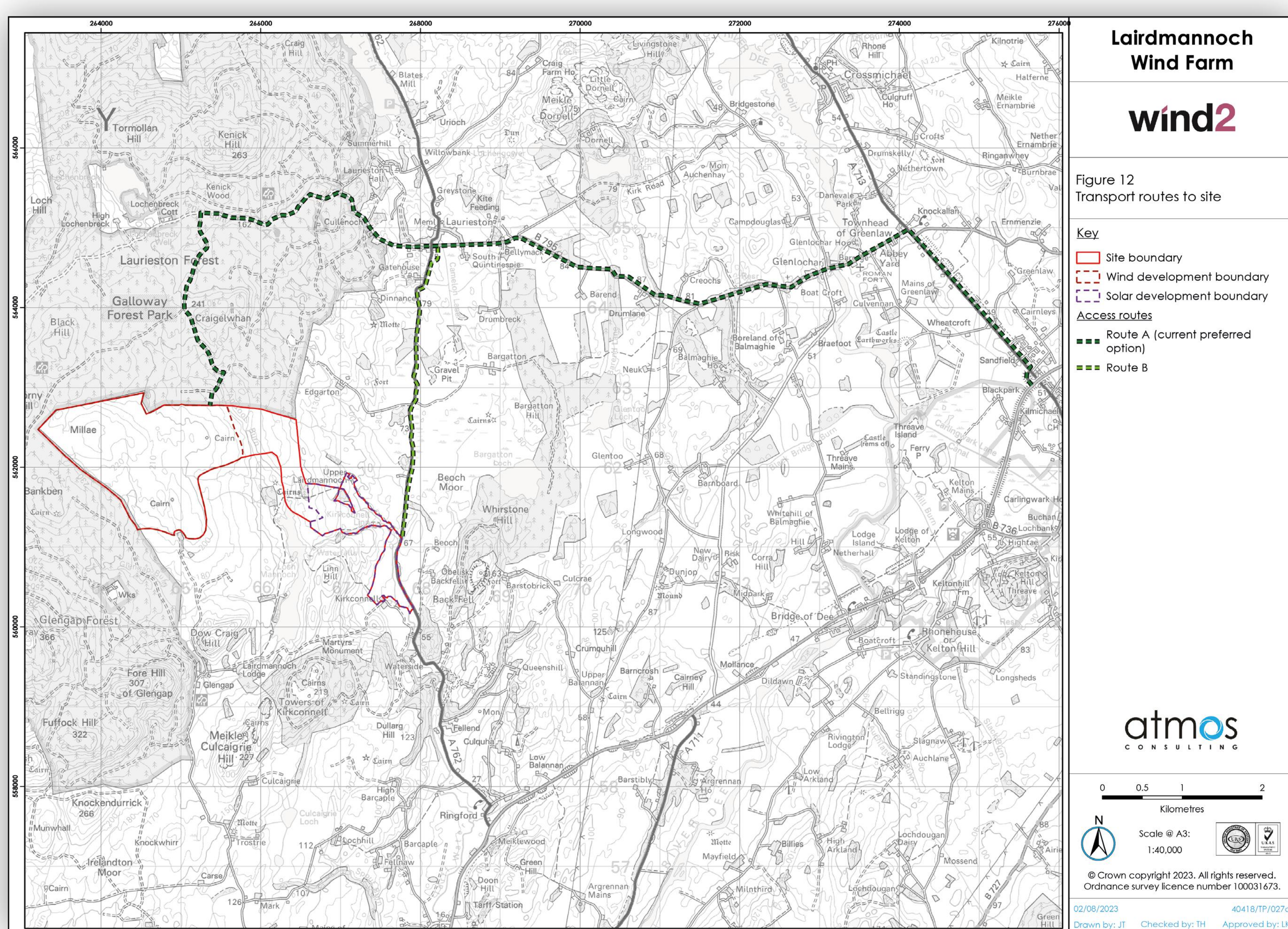
It is anticipated that wind turbine components will travel as Abnormal Indivisible Loads via the A75 and onto the A713 at Castle Douglas. From here components will travel along the B795.

The final route to site is still under assessment and will either take the A762 and access the site directly from the east or continue along the B795 to the existing forestry tracks, accessing the site from the north.

The need for onsite borrow pits is being evaluated. Onsite borrow pits could minimise traffic movements and disruption on the wider network, though nearby quarries are also being considered as a source of the required material.

Vehicle movements throughout the construction and operation of the proposed wind farm will be carefully controlled by a Traffic Management Plan (TMP). The TMP would be prepared in consultation with the Roads Authority and agreed with Dumfries and Galloway Council.

The potential transport route options are shown on the figure below.



View this information via the QR code below:



wind2

lairdmannochenergypark.co.uk

