

Environmental Impact Assessment (continued)

Transport and Access

Following the first round of public consultations, the project team received extensive feedback with regards to the initially proposed transport route through Laurieston. Concerns were expressed particularly in relation to volume of traffic, noise and traffic management in the village.

We therefore delayed the anticipated submission of the project to the Energy Consents Unit and as a result, have found 2 possible alternative routes.

It is now anticipated that wind turbine components will travel as Abnormal Indivisible Loads via either of the following routes:

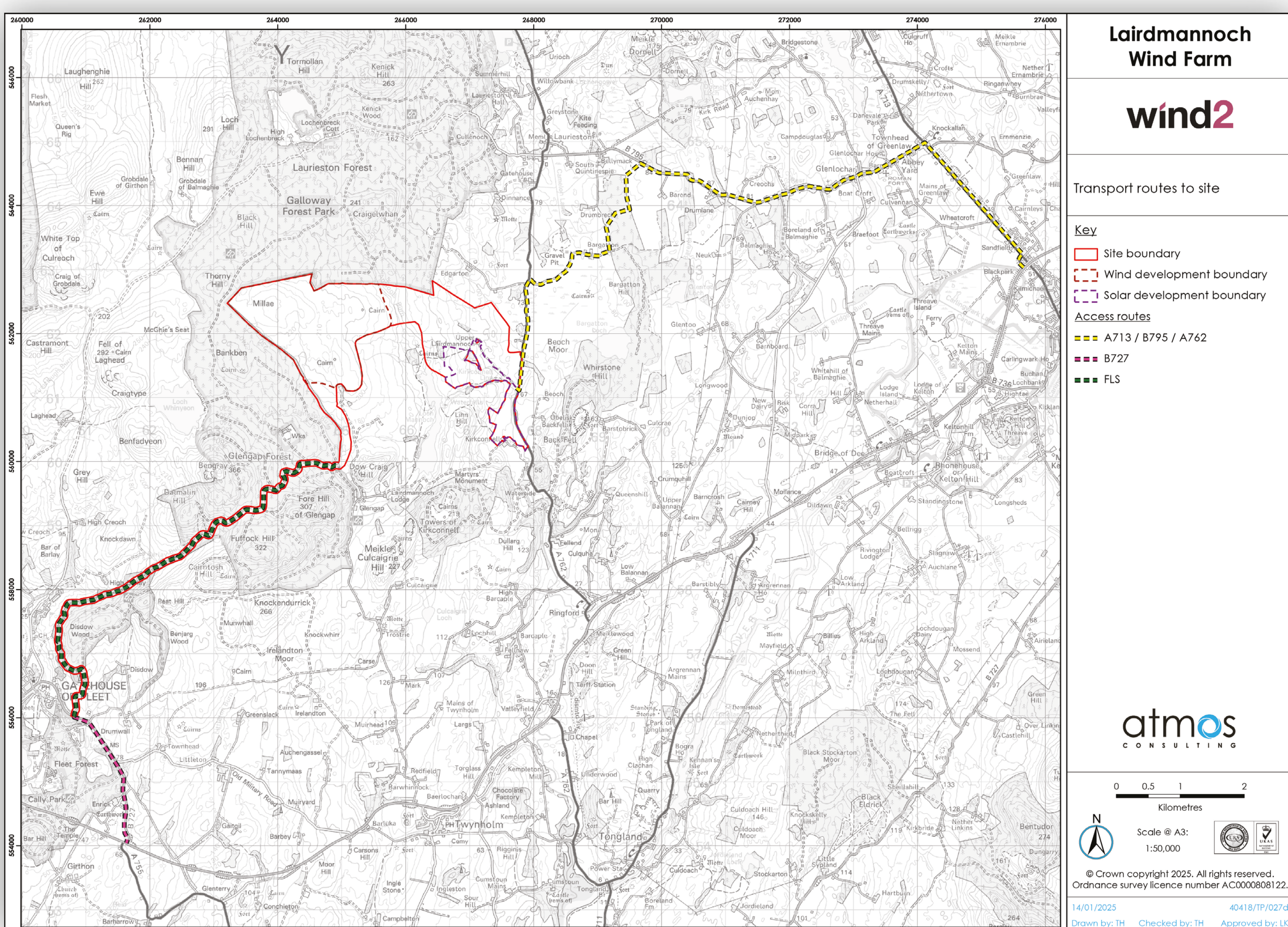
- Via the A75 and onto the B727 (Old Military Road) to the east of Gatehouse of Fleet. From here components will travel along the B727 onto an existing forestry track leading to the Glengap Forest and onto site from the southwest. This is the preferred option which will minimise disruption to communities in the vicinity of the project.
- Via the A75 and onto the A713 at Castle Douglas. From here the components will travel along the B795 onto an existing farm track at Barend Farm, through an existing forestry track at Bargatton Plantation and along an existing track at Bargatton. From here, the components would travel onto the A762 to the existing site entrance at Kirkconnell.

The final route to site is still under assessment but it is anticipated will follow either of these two routes.

The need for onsite borrow pits is being evaluated. Onsite borrow pits could minimise traffic movements and disruption on the wider network, although nearby quarries are also being considered as a source of the required material.

Vehicle movements throughout the construction and operation of the proposed energy park will be carefully controlled by a Construction Traffic Management Plan (CTMP). The CTMP would be prepared in consultation with the Roads Authority and agreed with Dumfries and Galloway Council. An Outline CTMP will be submitted as part of the Section 36 Application.

The potential transport route options are shown on the figure below.



View this information via the QR code below:



wind2

lairdmannochenergypark.co.uk

