

Lairdmannoch Energy Park

Environmental Impact Assessment

An Environmental Impact Assessment (EIA) for the proposed energy park site is currently in progress.

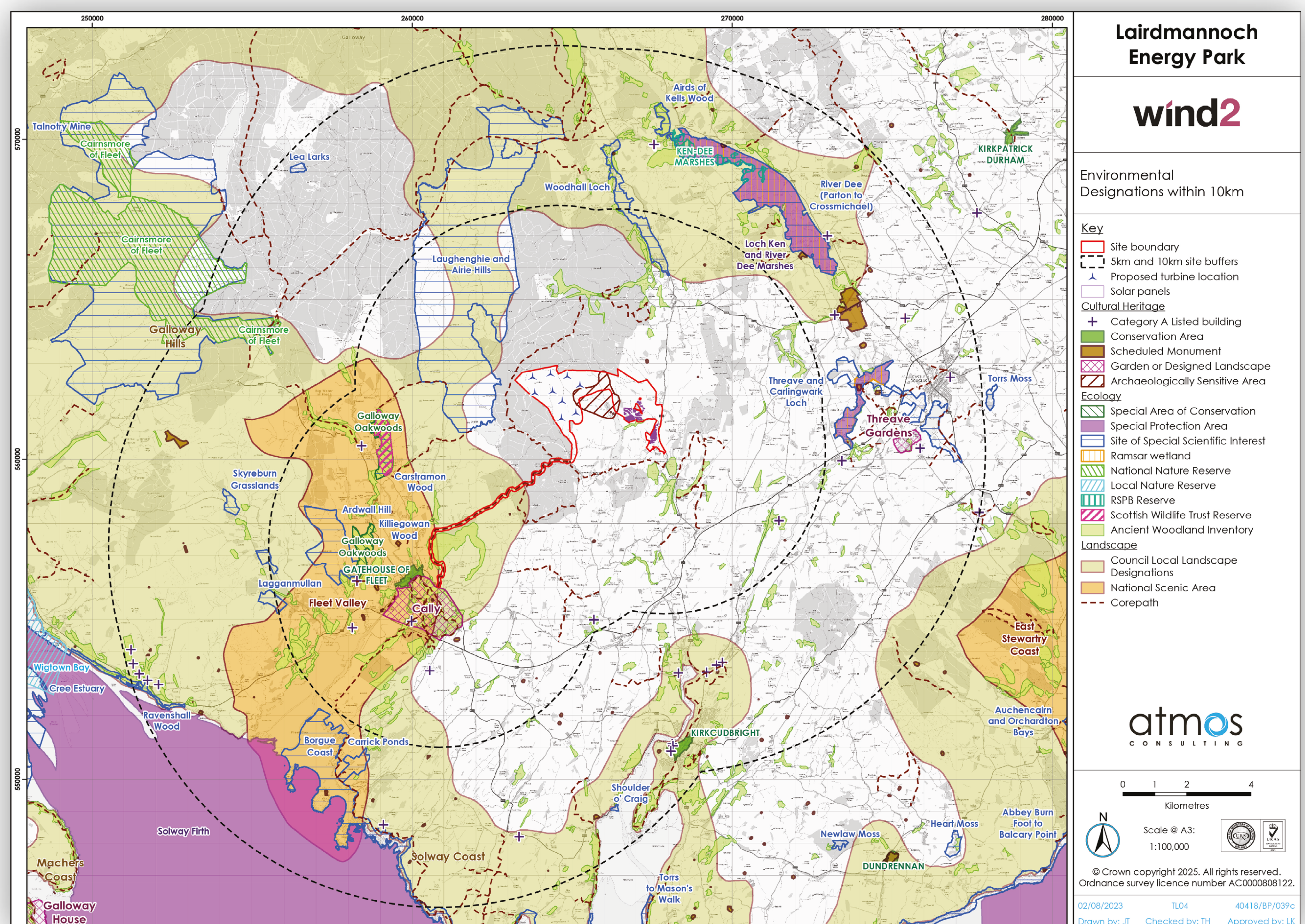
A Scoping Opinion was issued by the Energy Consents Unit in January 2024 which confirmed the scope of the EIA.

Consultation has been undertaken with Dumfries & Galloway Council and other key consultees such as NatureScot, Scottish Environment Protection Agency (SEPA), Royal Society for Protection of Birds (RSPB) and Southwest Scotland Environmental Information Centre to agree on the required scope of surveys, assessments and to safeguard sensitive habitats and species.

The results of the EIA will accompany the final Section 36 application to be submitted to the Energy Consents Unit in 2025.

The environmental impact assessment includes:

- **Ecology & Ornithology:** Extensive wildlife surveys (birds, bats, plants) have been conducted since 2019 to minimise impact on local ecosystems.
- **Water & Soil:** The project is designed to protect water and soil. Peat surveys have been carried out and infrastructure will be located away from areas of deeper peat wherever possible. The project is expected to offset its carbon footprint within 1-2 years.
- **Flood Risk:** A full flood risk assessment will be completed.
- **Cultural Heritage:** The project design minimises impact on nearby historical sites.
- **Noise:** Noise levels during construction and operation (from turbines and the solar farm) will be carefully managed and comply with all regulations.
- **Economy:** The project will be assessed for its positive economic impact, including job creation and local benefits.
- **Landscape:** A detailed visual impact assessment is being carried out from key viewpoints, agreed with the council and NatureScot. Visualisations (photomontages and wirelines) will be available.



View this information via the QR code below:



wind2

lairdmannochenergypark.co.uk

